

MANI  
CASA



## Quality Living Reimagined Newtown, Rajarhat

Stesalit Towers, Office #7, 4th floor, Plot No E2-3, Block - EP & GP, Sector V,  
Salt Lake, Kolkata - 700091  
+91-9073338396

[www.510earth.com](http://www.510earth.com)

## A location that makes a world of difference

Mani Casa exemplifies urban living surrounded by some of the best schools, hospitals, shopping centres and hotels in Kolkata. Effortlessly connected by the East-West metro, bus services and other forms of public transport, you'll find smart high street living here.

### Distance from the site (approx)

Narayana School	1.0 km
Nearest Metro Station (Kolkata)	1.4 km
DPS (Mega City)	2.6 km
Ohio Heart Hospital	1.2 km
Tata Medical	1.8 km
Eco Park	1.8 km
Anity University	1.4 km
The Westin Hotel	1.5 km
Axis Mall	4.4 km
University of Engineering	5.3 km
Sector V Crossing	6.7 km
City Centre II	5.0 km
Airport	11 km





## Block Plan

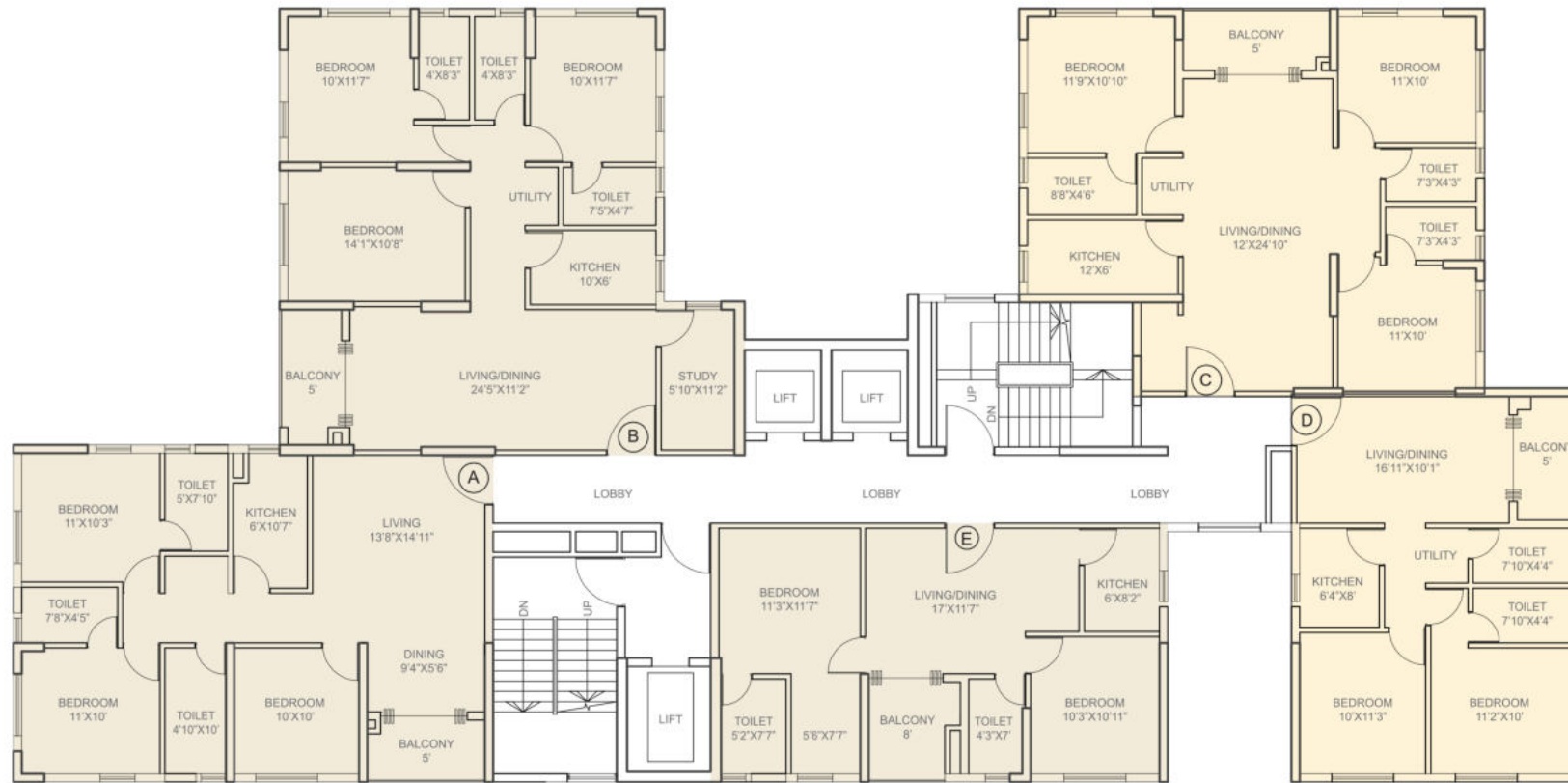
Disclaimer: All information, features and offerings in this document are subject to change without notice. Photographs used here are for illustrative purposes only and may not bear resemblance to actual features or offerings. This is not a legal or offer document. Any interested party should verify all the information mentioned in this document independently with the Developer prior to making any decision for buying any property in the Project. The user of this document shall be deemed to have confirmed that he/she has not relied on any information contained herein while making any booking/purchase in the Project of the Developer.





## Typical Floor Plan (Tower-1) G+12

Disclaimer: All information, features and offerings in this document are subject to change without notice. Photographs used here are for illustrative purposes only and may not bear resemblance to actual features or offerings. This is not a legal or offer document. Any interested party should verify all the information mentioned in this document independently with the Developer prior to making any decision for buying any property in the Project. The user of this document shall be deemed to have confirmed that he/she has not relied on any information contained herein while making any booking/purchase in the Project of the Developer.

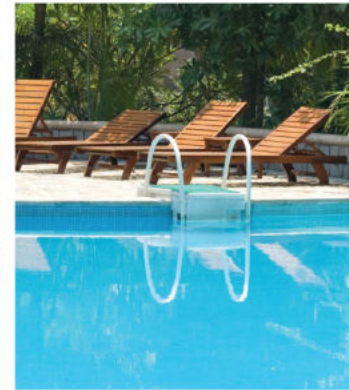


## Typical Floor Plan (Tower-3) G+16

Disclaimer: All information, features and offerings in this document are subject to change without notice. Photographs used here are for illustrative purposes only and may not bear resemblance to actual features or offerings. This is not a legal or offer document. Any interested party should verify all the information mentioned in this document independently with the Developer prior to making any decision for buying any property in the Project. The user of this document shall be deemed to have confirmed that he/she has not relied on any information contained herein while making any booking/purchase in the Project of the Developer.

## Proposed Amenities

- Swimming Pool
- Gymnasium
- Changing Room
- Childrens' Play Area
- Indoor Games
- Community Hall (AC)
- Rooftop Party Zone
- 24x7 Water Supply
- 24x7 Surveillance
- ION Filtration Plant
- Power Backup





# Specifications



## DOORS

- Rooms fitted with 35 mm thick flush doors
- Shutters hung from brass barrels
- Night latch for entrance door
- Mortise locks and door stoppers for bedroom and kitchen doors
- Bathroom latches on toilet doors with enamel paint for interior surfaces



## WINDOWS

- Anodised/powder coated aluminium or UPVC sliding windows with glass inserts and matching fittings

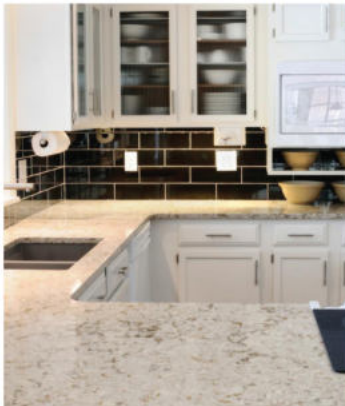


## FLOORS

- Vitrified tiles in living, dining and bedrooms
- Ceramic, antiskid tiles in bathrooms
- Kitchen floor finished with quality ceramic tiles
- Lift lobbies feature quality vitrified tiles with matching skirtings
- Ground floor lobby finished with Italian marble flooring
- Other common areas floored with screed concrete

## KITCHEN

- Granite cooking counters with stainless steel sink with tap of Jaquar/equivalent brand
- Water filter



## WALLS

- Exterior walls completed with cement paint and/or texture finish and glazing as per architectural scheme
- Interior walls finished with neat POP punning
- Kitchens feature ceramic tiles up to 2 ft in height above the kitchen counter
- Bathrooms completed with designer ceramic tiles up to door height



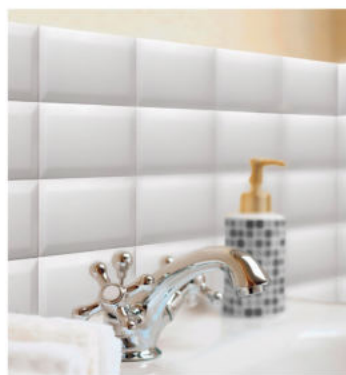
## SANITARYWARE

- Porcelain sanitaryware of Parryware/Hindware or an equivalent brand



## FIRE SUPPRESSION & DETECTION

- Fire fighting provision



## CP FITTINGS

- Concealed piping system for hot and cold water lines
- Geyser in master bathroom
- Sleek single lever fittings of Jaquar or an equivalent brand
- Matching glass mirrors, shelves, soap trays and towel rails

## ELECTRICAL WIRING & FITTINGS

- Totally concealed copper wiring for all rooms
- Air conditioning plug points in all bedrooms and living rooms
- Light and plug points in bedrooms, dining and drawing rooms as per architectural scheme
- Video door phone at entrance door
- Telephone points in living room and bedrooms

- Generator power back-up to the extent of 1 watt/sq ft of built-up area
- CCTV surveillance of ground floor lobby
- Geyser points in all toilets
- Cable television outlets in all bedrooms and living room