

A  
premium  
address  
with a  
glorious  
heritage

**PURTI**  
HASTINGS

a boutique residence

[www.510earth.com](http://www.510earth.com)



A privilege

for a chosen few

# PURTI

## HASTINGS

Nestled amidst a location with a glorious heritage, it offers exclusivity, peace and a chance to reconnect with yourself. Being centrally located and well-connected to the corporate, cultural and social hub of the city, it ensures that your requirements are taken care of.

[www.510earth.com](http://www.510earth.com)





Rendered elevation of Purti Hastings

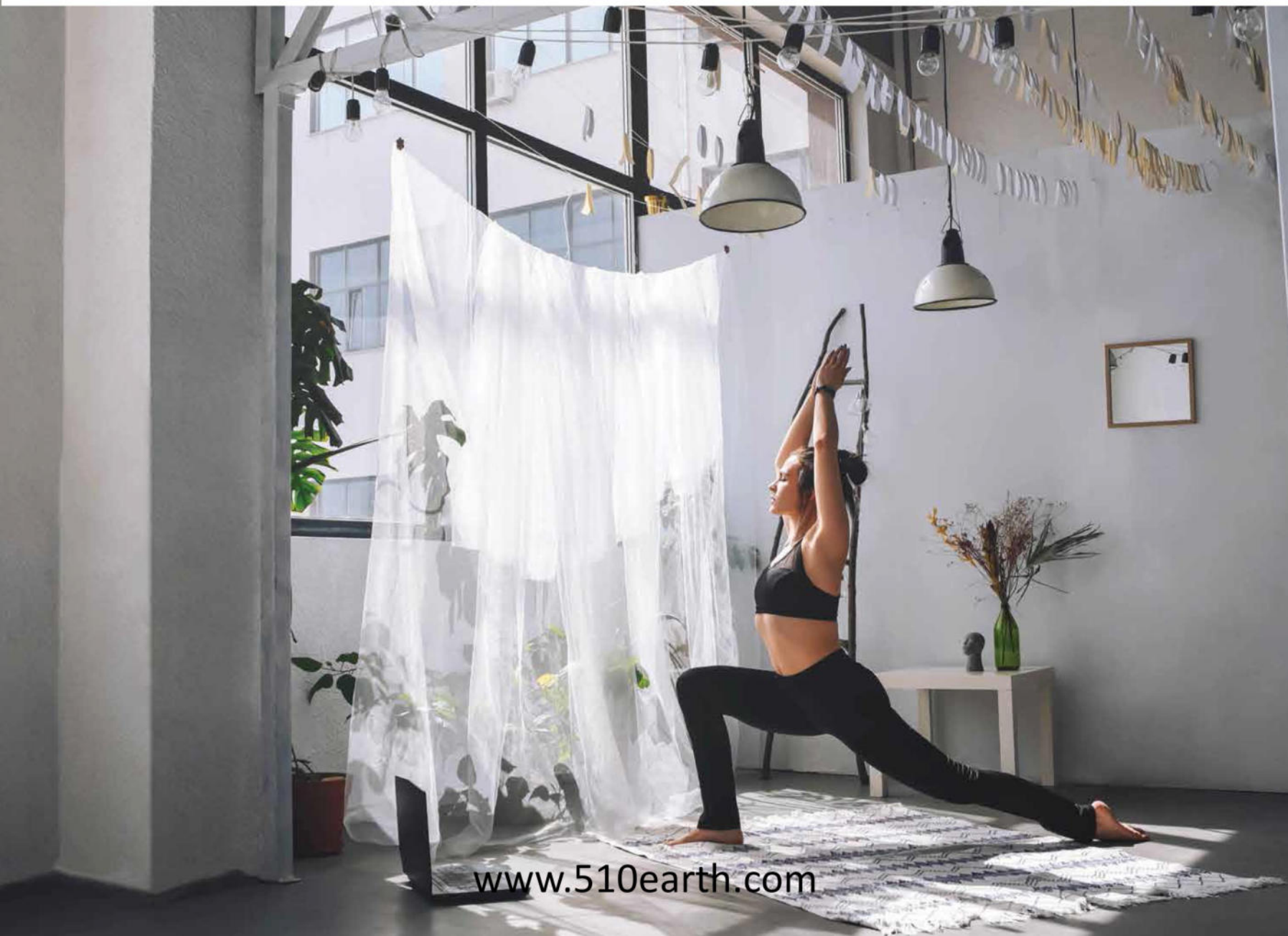
# Boutique Residence

The residences here are meticulously designed and encapsulates the essence of luxury and exclusivity.

By offering you space, privacy and Vastu compliant flats for a holistic living experience, we cater to your convenience and lifestyle needs.

[www.510earth.com](http://www.510earth.com)

“Crafting homes  
that reverberate  
happiness.”



Amidst the  
chaos and peace,  
remind yourself  
to relax and  
indulge.



# Amenities & Facilities



Swimming Pool on Terrace



Gymnasium



Games Room



Mandir

# Life is better by the poolside

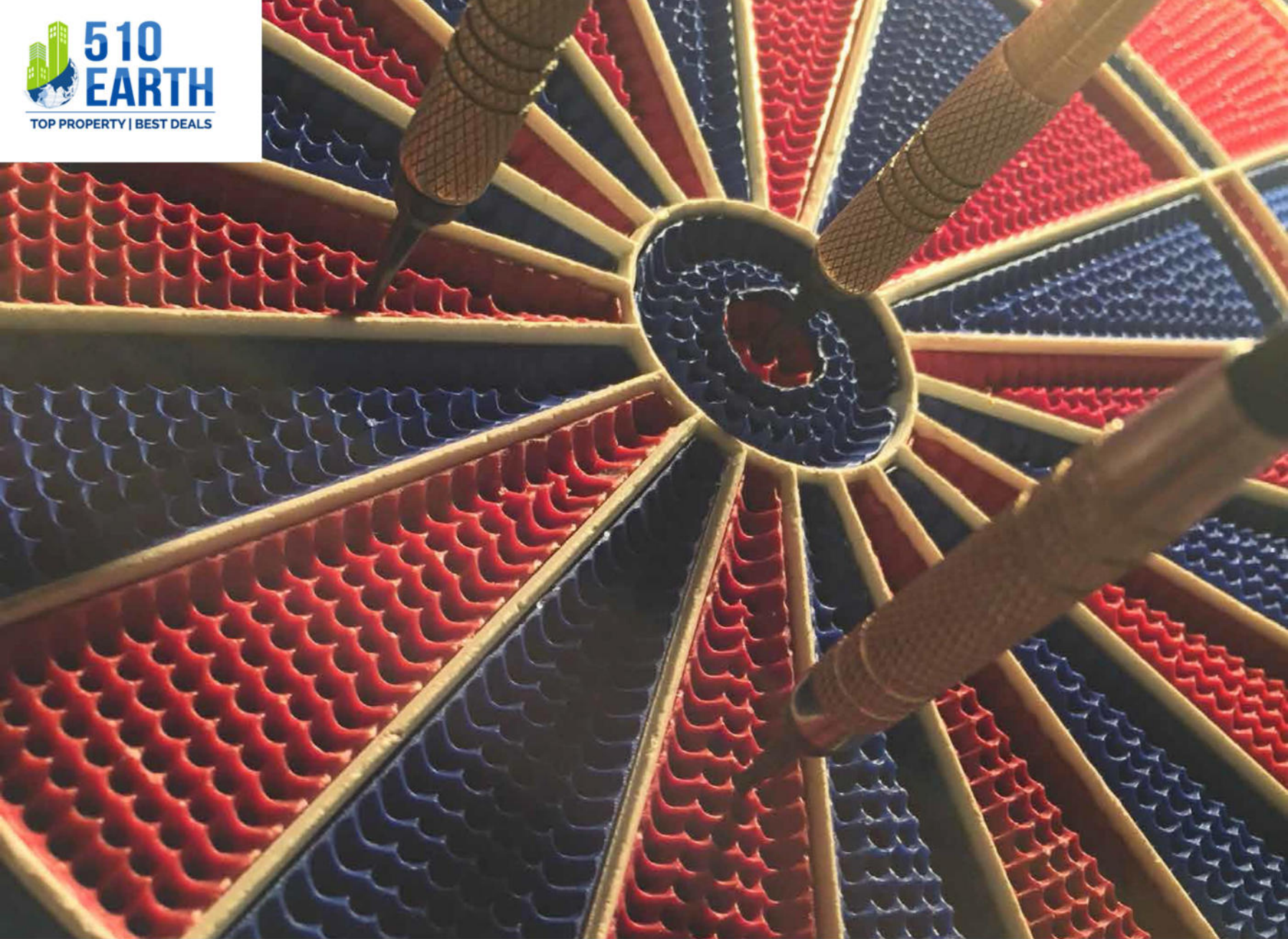
With attention to the intimate details and the usage of finer materials, there is a touch of class and exquisiteness in every corner, hence offering an immersive living experience.





# Health & Wellness

With a multi-purpose gym in the health and fitness zone, it ensures its residents an active lifestyle.



# Recreation & Entertainment

By constantly creating opportunities for our residents' well-being and providing multiple recreational activities, ensuring that the residents enjoy their favourite pastimes.

[www.510earth.com](http://www.510earth.com)

# Step into a world that is build only for you





**PURTI  
HASTINGS**

# Specifications

**Structure**     Brick and RCC structure.

## ———— *Living Room / Dining Area* ————

**Flooring**     Imported Marble

**Wall**     Putty

**Ceiling**     Putty

**Windows/ Glazing**     Powder coated aluminum windows

**Electrical**     Concealed Copper with  
Modular switches and socket

## ———— *Bedroom* ————

**Flooring**     Imported Marble

**Wall**     Putty

**Ceiling**     Putty

**Windows/ Glazing**     Powder coated aluminum windows

**Electrical**     Concealed Copper with Modular  
switches and socket

## ———— *Balcony* ————

**Flooring**     Imported Marble

**Wall**     Painted to match exterior elevation

**Ceiling**     Painted to match exterior elevation

Railing Glass railing

Electrical Concealed Copper with Modular switches and socket

---

## *Kitchen*

---

Flooring Imported Marble

Dado White Top (up to 2 feet from Kitchen Slab)

Ceiling Putty

Kitchen Sink Stainless Steel

Windows/ Glazing Powder coated aluminum windows

Electrical Concealed Copper with Modular switches and socket

Counter White Top

---

## *Toilets*

---

Flooring Vitrified Tiles

Wall Vitrified Tiles

Ceiling Putty

Windows/ Glazing Powder coated aluminum windows

Sanitary ware & CP fittings Sanitary Ware and CP fittings of KOHLER brand

Electrical Concealed Copper with Modular switches and socket

---

## *Misc.*

---

Digital Lock and Panasonic Video Door Phone on Main Door



Crafted homes that  
enrich your lifestyle

[www.510earth.com](http://www.510earth.com)



# Ground Floor Plan



## Legend

- 1. Gymnasium
- 2. Games Room
- 3. Mandir
- 4. Utility Room
- 5. Lobby
- 6. Lift
- 7. Toilet
- 8. Space for DG

Disclaimer: All internal dimensions for carpet area are from unfinished wall surface. Furniture & Fixtures shown are representative & are not part of the Flats. Minor variation (+/-) 3% in actual carpet areas may occur on account of site conditions/ columns/ finishes. Only 50% of the terrace area considered in Saleable Area of Flat.





# Typical Floor Plan



Disclaimer: All internal dimensions for carpet area are from unfinished wall surface. Furniture & Fixtures shown are representative & are not part of the Flats. Minor variation (+/-) 3% in actual carpet areas may occur on account of site conditions/ columns/ finishes. Only 50% of the terrace area considered in Saleable Area of Flat.

# Flat A



## Floor Plan



Key Plan

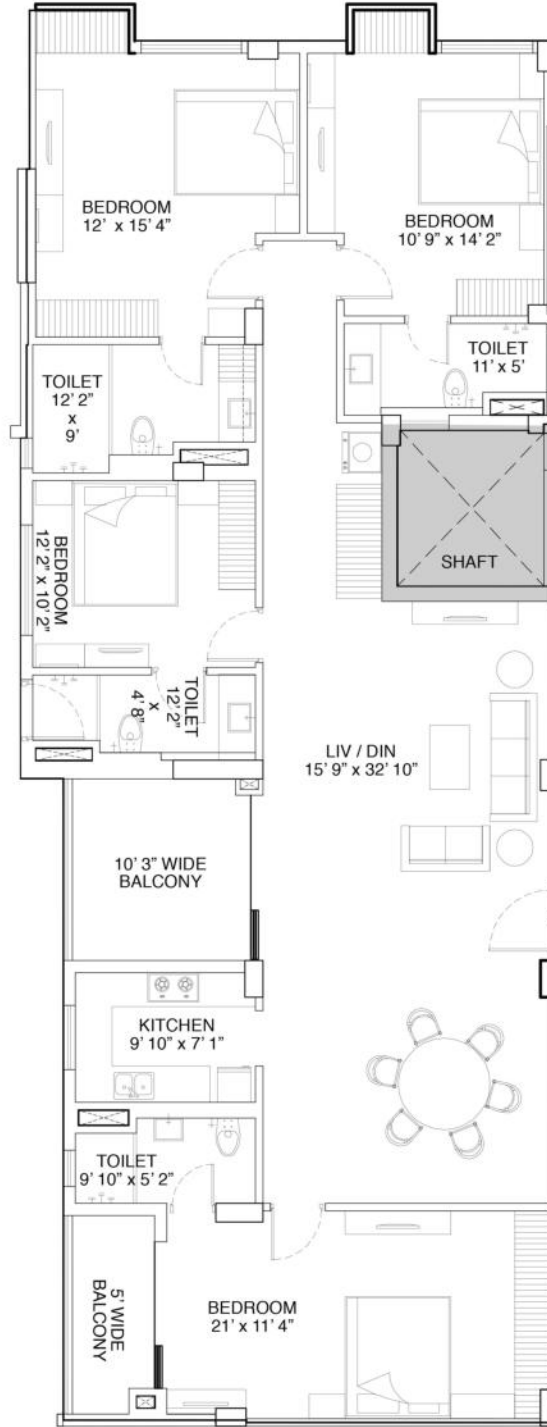
Disclaimer: All Internal dimensions for carpet area are from unfinished wall surface. Furniture & Fixtures shown are representative & are not part of the Flats. Minor variation (+/-) 3% in actual carpet areas may occur on account of site conditions/ columns/ finishes. Only 50% of the terrace area considered in Saleable Area of Flat.

Flat No.	Type	Flat Area Sqft.	Flat Area Sqft.	Balc. Sqft	Utility Sqft	Utility Sqft	Saleable Area
		Built-up	Carpet		Built-up	Carpet	Total
Flat A	4B.H.K& 4 TOI.	1585	1426	50	65(A)	51	2206

# Flat B



## Floor Plan



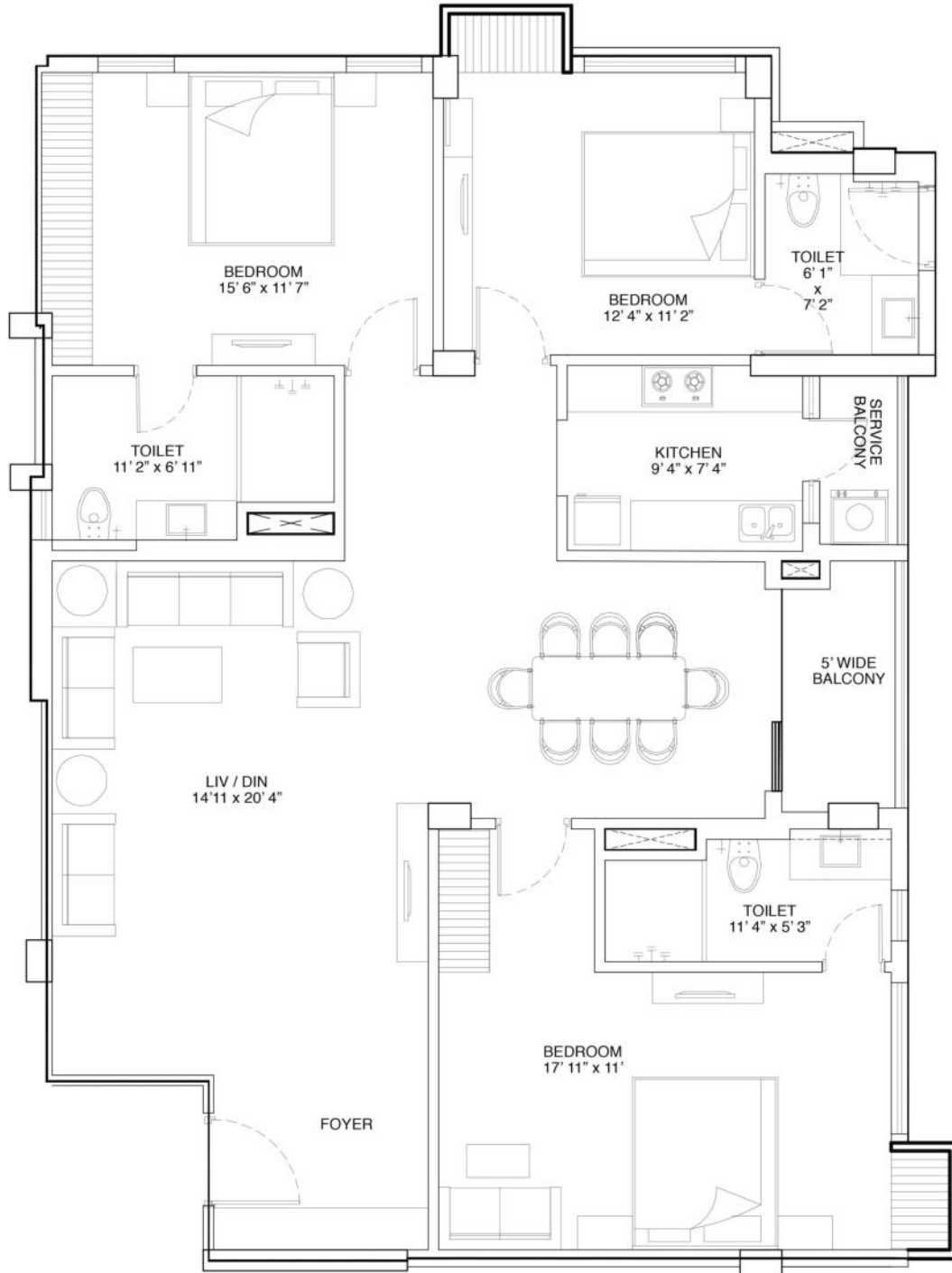
Disclaimer: All Internal dimensions for carpet area are from unfinished wall surface. Furniture & Fixtures shown are representative & are not part of the Flats. Minor variation (+/-) 3% in actual carpet areas may occur on account of site conditions/ columns/ finishes. Only 50% of the terrace area considered in Saleable Area of Flat.

Flat No.	Type	Flat Area Sqft.	Flat Area Sqft.	Balc. Sqft	Utility Sqft	Utility Sqft	Saleable Area
		Built-up	Carpet		Built-up	Carpet	Total
Flat B	4B.H.K& 4 TOI.	1978	1699	148	57(B)	47	2727

# Flat C



## Floor Plan



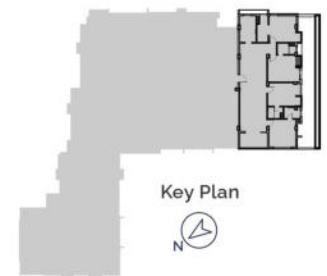
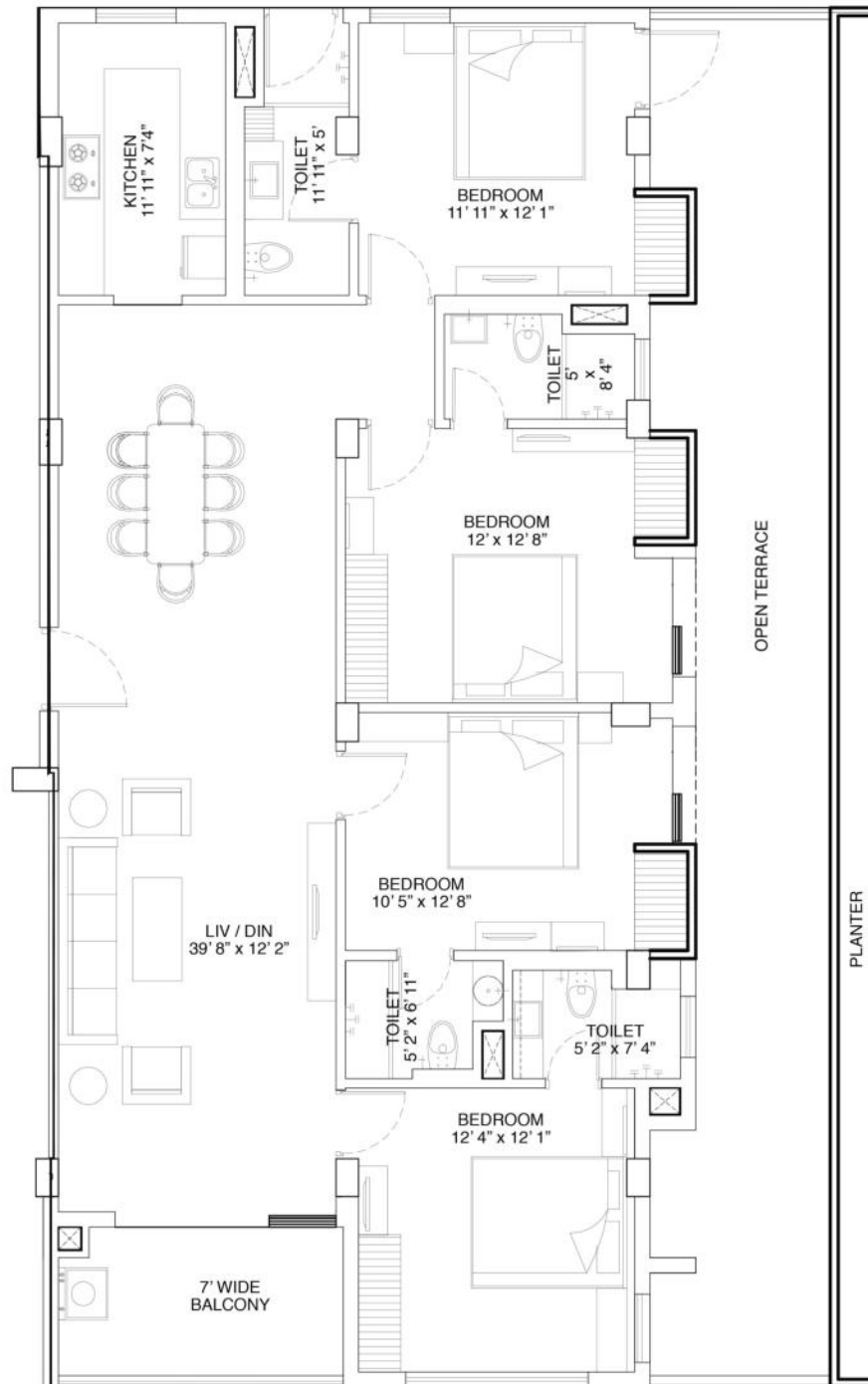
Disclaimer: All Internal dimensions for carpet area are from unfinished wall surface. Furniture & Fixtures shown are representative & are not part of the Flats. Minor variation (+/-) 3% in actual carpet areas may occur on account of site conditions/ columns/ finishes. Only 50% of the terrace area considered in Saleable Area of Flat.

Flat No.	Type	Flat Area Sqft.	Flat Area Sqft.	Balc. Sqft	Utility Sqft	Utility Sqft	Saleable Area
		Built-up	Carpet		Built-up	Carpet	Total
Flat C	3B.H.K & 3 TOI.	1548	1383	68	54(C)	43	2151

# Flat D (1st Floor)



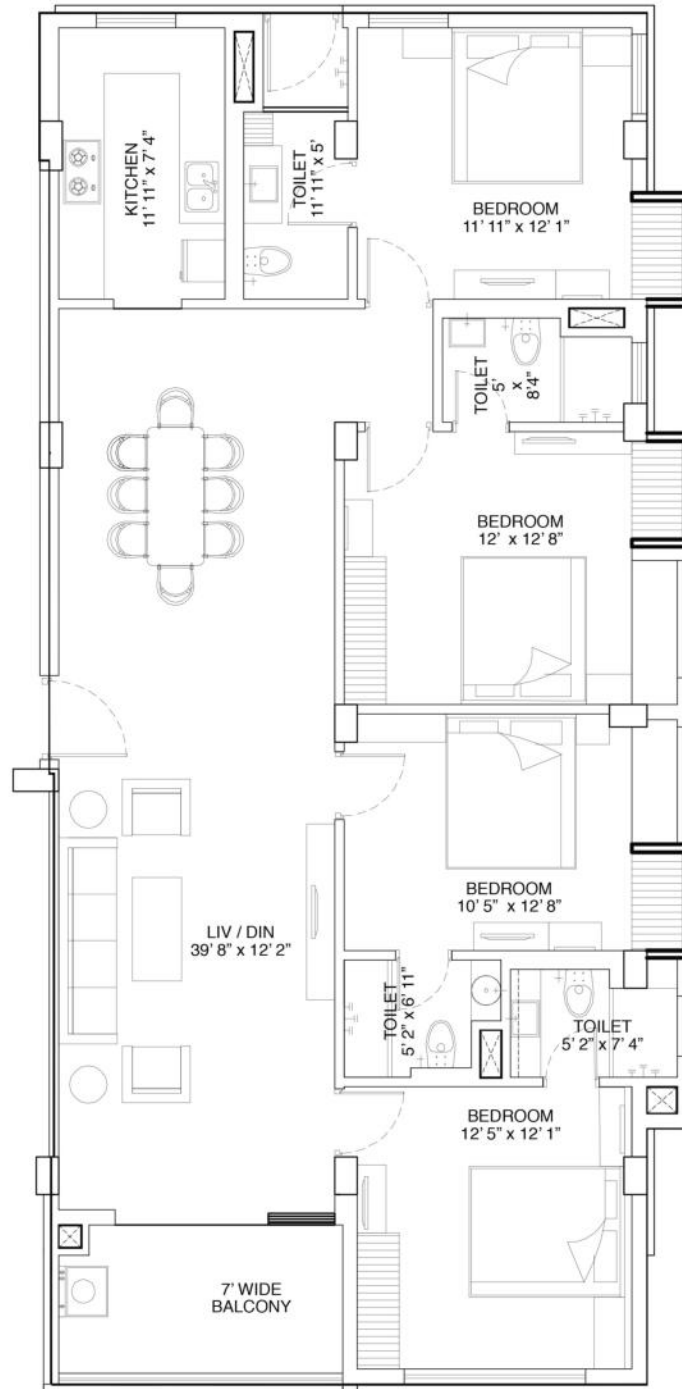
## Floor Plan



Disclaimer: All internal dimensions for carpet area are from unfinished wall surface. Furniture & Fixtures shown are representative & are not part of the Flats. Minor variation (+/-) 3% in actual carpet areas may occur on account of site conditions/ columns/ finishes. Only 50% of the terrace area considered in Saleable Area of Flat.

Flat No.	Type	Flat Area Sqft.	Flat Area Sqft.	Balc. Sqft	Terrace Sqft	Utility Sqft	Utility Sqft	Saleable Area
		Built-up	Carpet			Built Up	Carpet	Total
Flat D (1st)	4B.H.K& 4 TOI.	1600	1410	83	520	57(D)	47	2570

# Flat D (2nd -4th)



Disclaimer: All Internal dimensions for carpet area are from unfinished wall surface. Furniture & Fixtures shown are representative & are not part of the Flats. Minor variation (+/-) 3% in actual carpet areas may occur on account of site conditions/ columns/ finishes. Only 50% of the terrace area considered in Saleable Area of Flat.

Flat No.	Type	Flat Area Sqft.	Flat Area Sqft.	Balc. Sqft	Utility Sqft	Utility Sqft	Saleable Area
		Built-up	Carpet		Built-up	Carpet	Total
Flat D (2 -4)	4B.H.K& 4 TOI.	1600	1410	83	81(D)	47	2247

An address that is the centre of everything.

# 9/1B Bakery Road

Ordinance Club	450 m	2 mins
Hooghly Bridge	1 km	3 mins
Race Course	1.6 km	5 mins
Taj Bengal	2.3 km	5 mins
National Library	2.4 km	5 mins
Eden Gardens	3.2 km	5 mins
Calcutta Swimming Club	3.3 km	6 mins
Esplanade	3.7 km	7 mins
New Market	3.8 km	7 mins
Governor House	4 km	8 mins
Reserve Bank Of India (RBI)	4.2 km	8 mins
Elgin Road	3.9 km	10 mins
Dalhousie	4.3 km	11 mins
Theatre Road	3.9 km	12 mins
Park Street	5 km	12 mins
Bada Bazaar	5.7 km	20 mins
JW Marriott	8.7 km	20 mins
Sector V	15 km	27 mins
Airport	23 km	42 mins

# PURTI HASTINGS



**PURTI  
HASTINGS**







Building your gateway

to an escalated lifestyle



Stesalit Towers,  
Office #7, 4th floor  
Plot No E2-3, Block - EP & GP, Sector V,  
Salt Lake, Kolkata - 700091  
+91-9073338396

All illustrations are artist's impressions and such illustrations may differ from the actual final presentation of the unit and area and are subject to change.

[www.510earth.com](http://www.510earth.com)