



STEP
WITH
IN





SINK DEEP

Feeling a quiet content
Pacing life to your mood
Taking in fresh air, sun, water
Embracing green

OWN A LIFETIME

There's a city outside, resort inside
Buzz outside, bliss inside
Dazzle outside, dream inside
On EM Bypass, off noise, off pollution
Covered with plush greens and luxuries





LIVE THE DREAM

Run, play, fish, plunge, snooze
dress up, dance, wish, soak in,
jog, scream, get together
relive, grow, retire

7 Blocks, 530 Apartments
2 / 3 / 4 BHK Homes
Plush landscaping
30,000 sq.ft. exquisite Clubhouse



OZONE

This architectural rendering depicts the entrance to the Ozone apartment complex. A prominent white stone archway with the 'OZONE' logo in green and black letters serves as the main entrance. To the right, a tall wooden slat structure also features the 'OZONE' logo. The background shows a tall, modern apartment building with multiple balconies. The foreground includes a paved area with a white car, a few people walking, and a landscaped area with trees and a fountain. The sky is clear with some birds flying.

OZONE

ENVIOUS LOCATION

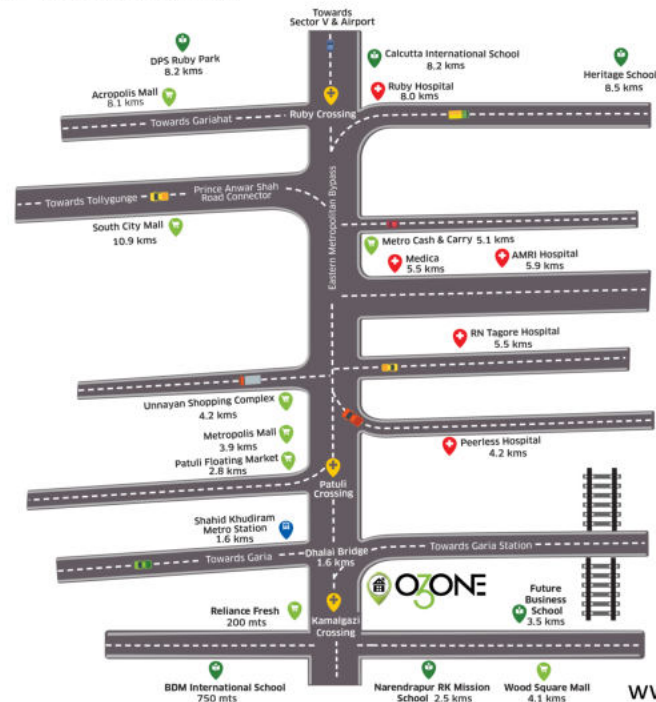
	Rashbehari Connector	71 Kms
	Prince Anwar Shah	7.3 Kms
	Amri Hospital	5.9 Kms
	Ajoy Nagar	4.4 Kms
	Wood Square Mall	4.1 Kms
	Metropolis Mall	3.9 Kms
	Patuli	2.2 Kms
	Shahid Khudiram Metro	1.6 Kms
	BDM International School	750 mts

The Kms are as per Google map



Location map not to scale

The route to Ozone



PLUSH LANDSCAPING



NATURAL POND

YOGA
CABANAS

FEEL GOOD

A book, coffee and the winds
at your balcony take you someplace else
Being home is sheer pleasure
Stepping out is as convenient



PLAY
ZONE

TAKE YOUR TIME

Here's a reward for coming this far

The CLUB

Finest luxuries spread over 30,000 sq.ft. in a single floor

From a coveted gymnasium to rooftop party deck

Yoga cabanas to elaborate playrooms

And more to live a fuller life

POOLSIDE LUXURY



GYMNASIUM



BANQUET HALL

PARTY
DECK

OZONE



PARTY
LOUNGE

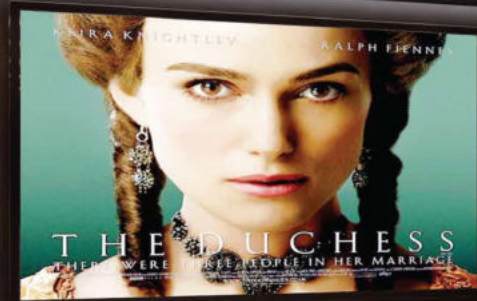


CAFETERIA

MASSAGE ROOM



www.510earth.com



CINEPLEX

CRECHE

KIDS' ROOM

www.510earth.com

GUEST ROOM



www.510earth.com

GO FORTH

At the sports courts
Amphitheater
Open cabanas
Yoga atriums
Party pavilion
Because life is a sum of moments
and how you spend it
has been thought through



MULTIPURPOSE COURTS

CULTURAL
FUNCTION AREA

CRICKET NET PRACTICE AREA

BADMINTON COURT

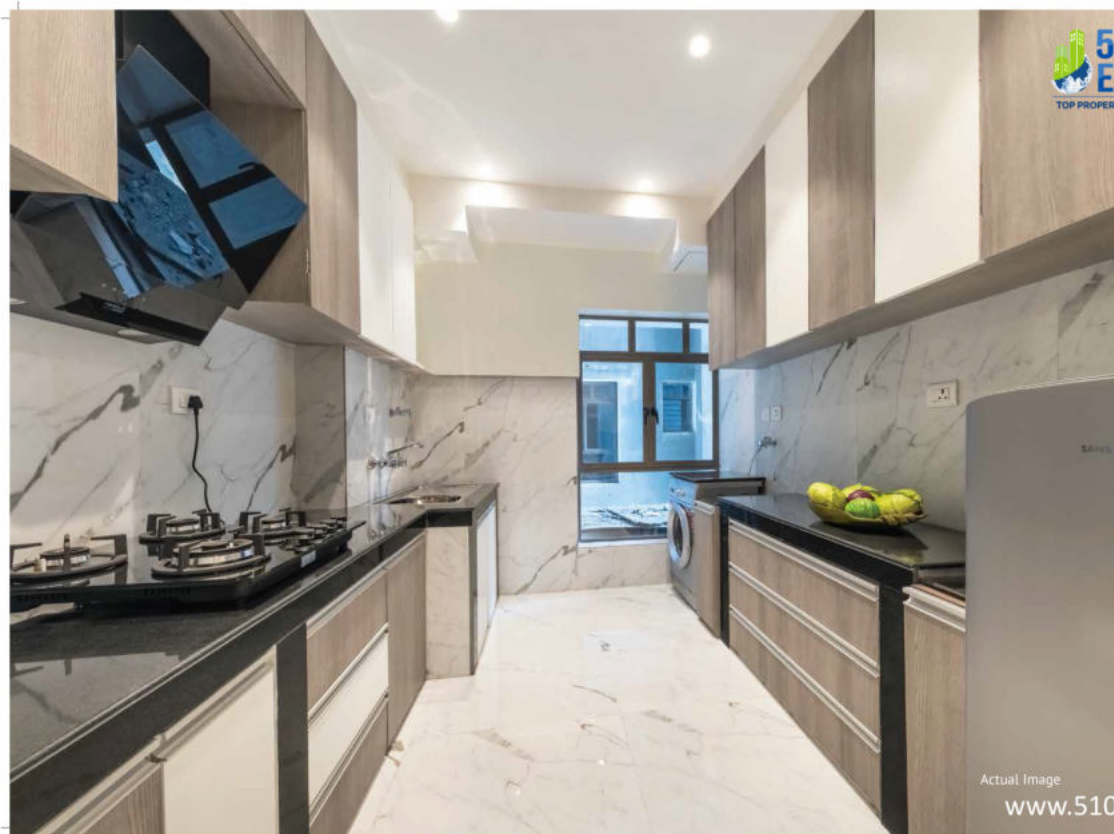
INDOOR
GAMES

FORGET

Space out at your balcony
Fill with pride in your living room
Enjoy a spacious home
that celebrates design, build and luxury

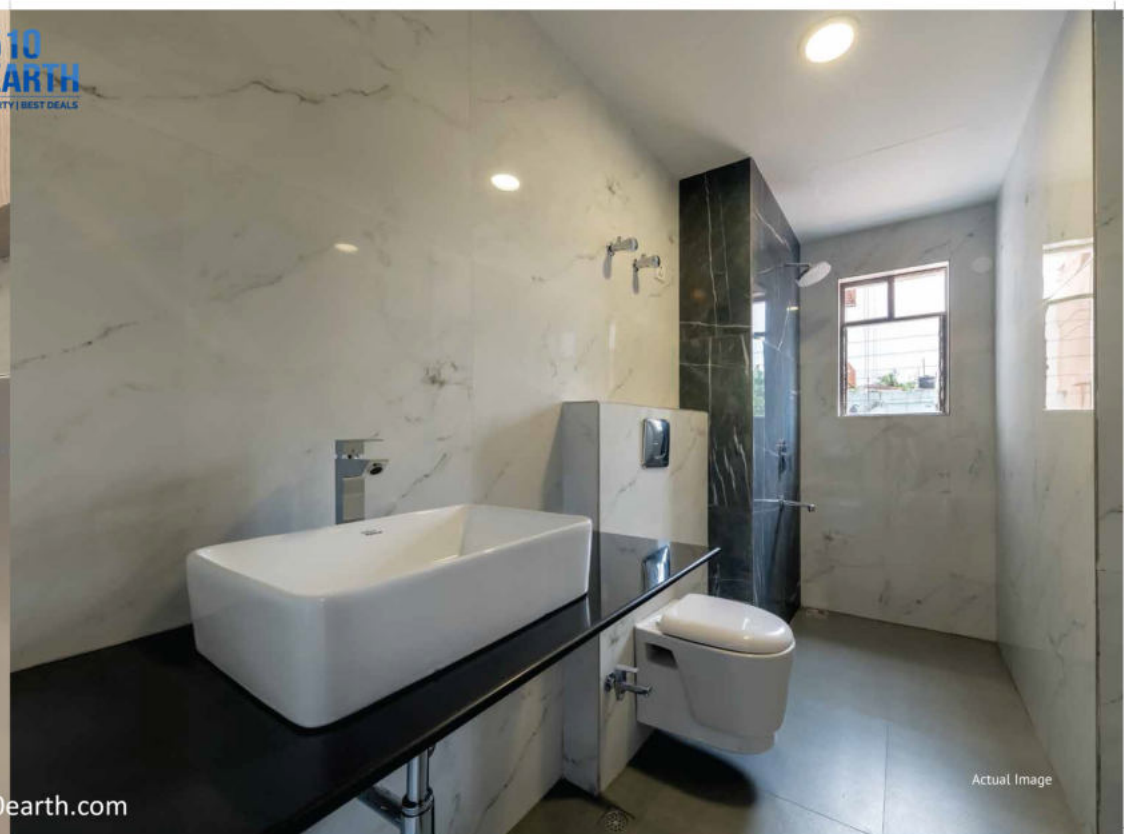






Actual Image

www.510earth.com



Actual Image



BALANCE



Homes at ozone
Maintain environmental balance
Enhance water and energy efficiency
Enrich ecological well being.
We've paid attention to green with
A sewage treatment plant
Efficient exterior glass
Low flow water fixtures
Certified wood
Low VOC paints (only in lobby area)
Efficient light fixtures
Car charging points
Recycled and locally sourced materials
to offer homes a green heart and soul.



EVERYTHING

The Club

- AC Indoor Games Room with Table Tennis, Carrom, Board Games and Pool Table
- Party Roof
- Cafeteria
- Well equipped AC Gymnasium
- Swimming Pool with Jacuzzi
- Kid's Pool
- Massage Room
- Steam Bath
- Cineplex
- Indoor Kids Play Room plus Creche
- Party Lounge
- Banquet Hall with Pantry
- Guest Rooms

- AC Community Hall
- Landscaped Area with Adda Zone
- Multipurpose Play Court with Amphitheatre / Cultural Function Area
- 2 large Natural Water Body with Walkway all around the Water Body
- Yoga & Meditation Pavilion facing the Pond
- Outdoor Children's Play Area
- Separate Senior Citizen Area
- Common Multipurpose Party Roof in each block
- Fire Fighting System
- Common Toilet in Each Floor
- Central Garbage Collection System
- Provision for Split AC System including drainage pipe & AC ledge to be provided by builder for ready installation of Split AC

24 Hours High End Smart Security System

- Boom Barrier on the main gate
- Smart Card entry
- State-of-the-art IP Video Phone System
- Smart CCTV connected to Video Phone within the flat

Valuable Inclusions:

- Visitors Car Parking
- 24 Hours Power Back-up
- 24 Hours Filtered Water Supply
- Facility Management Service Office with Storage Area
- STP Plant
- Common Washing Machine on Roof
- Cable Line
- Intercom Facility
- Solar Street Lights in Common Area

REASSURING



★ CRISIL Real Estate Rating - Kolkata 6 Star Project



★ ABP News Award - Environment Friendly Project of the Year, 2016



★ DNA Round Table Award - Environment Friendly Project of the Year, 2016



★ CNBC Real Estate Award - Best Residential project under mid-Segment Project (East), 2019



★ 11th Realty+Excellence Award - Mid-Segment Project of the Year, 2019

Completed Projects



Jubilee Park



Sonargaon



Tech Park



Palazzo



Corporate Park



Sherwood Estate

Ongoing Projects



Vyom



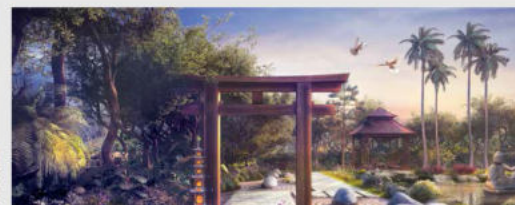
Panache



Eternis



The Address



Zen

PAST & PRESENT

ENQUIRIES



Marketing Partner
Stesalit Towers,
Office #7, 4th floor
Plot No E2-3, Block - EP & GP, Sector V,
Salt Lake, Kolkata - 700091
+91-9073338396

Phase II - HIRA/P/SOU/2018/000009
Phase III - HIRA/P/SOU/2019/000524 | hira.wb.gov.in



Co-Developer



Excellence is an attitude. This belief enables us to create lifestyles.
We bring unparalleled experiences with real estate projects across the country.

DISCLAIMER: Photographs used in this brochure are artist impression for illustration purpose only. The information, features, offerings and other details herein are only indicative and the developer / owner reserves its right to change any or all of these in its discretion subject to grant of approval from relevant authorities. This printed material does not constitute an offer, an invitation to an offer and / or commitment of any nature between the developer/owner and recipients. The developer's / owner's website(s) and other advertising and publicity material include Artist's impression indicating the anticipated appearance of completed development. No warranty is given that the completed development will comply in any degree with such artist's impression. Costs, designs and facilities and/or specifications may be subject to change without notice.

www.510earth.com