



# SALTEE SPLENDORA



**SALTEE SPLENDORA**

**A LIFE EMBRACED**







# HOME AND HOUSE EMBRACED



Life is fleeting away. Don't let it slip through the hands of

time. Embrace it. Give the love back.

Find it at Saltee Splendora - a G+7 Building with

63 Apartments, Located on the Rajarhat 6 Lane

Expressway. Hold it in your arms.

**[www.510earth.com](http://www.510earth.com)**





# IN THE SEARCH OF SERENITY

[www.510earth.com](http://www.510earth.com)





## MAPS AND MINDS EMBRACED



All roads of the city lead to Saltee Splendor.

It is strategically planned out at Gopalpur, Rajarhat.

**3 mins from City Centre II**

**4 mins from Eco-tourism Park & Convention Center**

**7mins from Kolkata International Airport**

**10 mins from Sector V, IT Hub of Kolkata**









Yoga meditation area



Barbecue lounge



Children's play area

## TERRACE AND TURQUOISE EMBRACED



Terrace garden

Yoga meditation area

Barbecue lounge

Adda zone

Children's play area







# CLUB INFINITO

## SPORTS AND SOLACE EMBRACED



Club Infinito offers you a range of exciting recreational lifestyle facilities. Whether it is about unwinding in the swimming pool after work or working out in the mornings at the gym. Team up with your next-door-neighbour for a time-out in the games room.





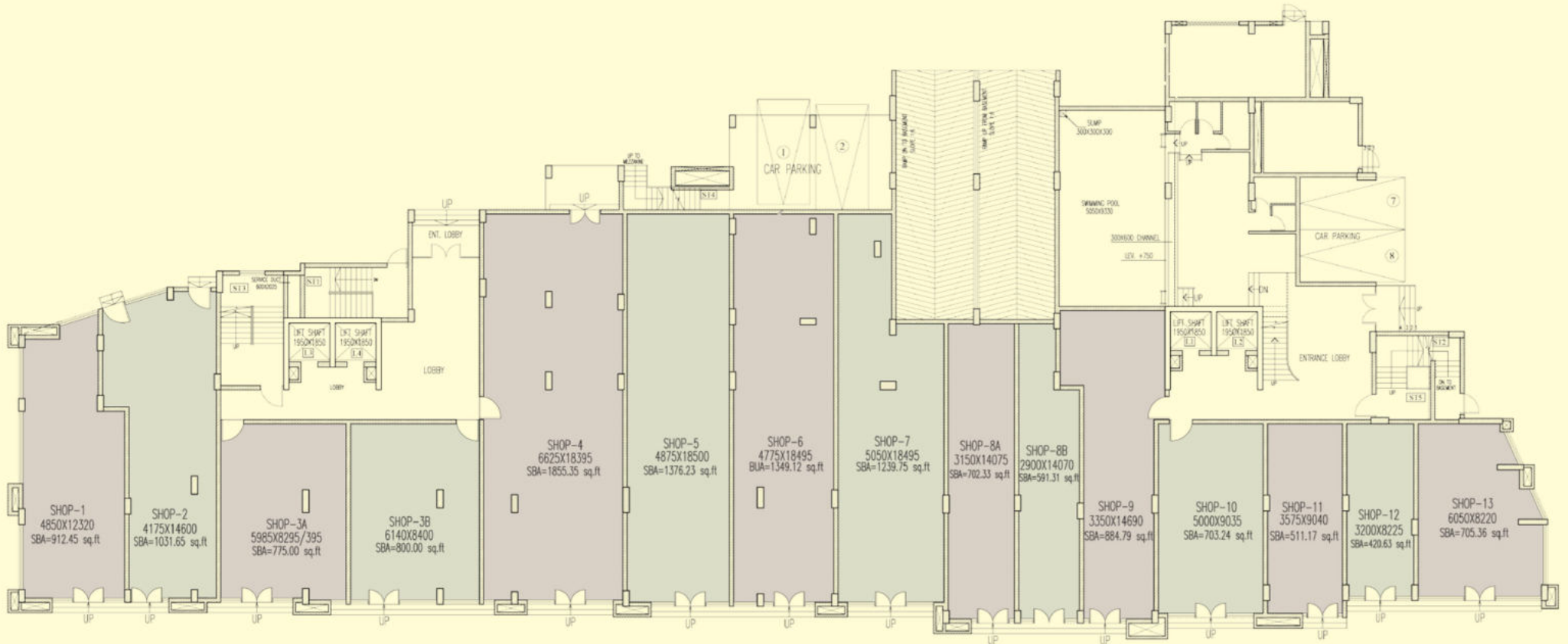












GROUND FLOOR PLAN

Shop No	SBU Area
1	912.45 Sq.Ft.
2	1031.65 Sq.Ft.
3A	775 Sq.Ft.
3B	800 Sq.Ft.

Shop No	SBU Area
4	1855.35 Sq.Ft.
5	1376.23 Sq.Ft.
6	1349.12 Sq.Ft.
7	1239.75 Sq.Ft.

Shop No	SBU Area
8A	702.33 Sq.Ft.
8B	591.31 Sq.Ft.
9	884.79 Sq.Ft.
10	703.24 Sq.Ft.

Shop No	SBU Area
11	511.17 Sq.Ft.
12	420.63 Sq.Ft.
13	705.36 Sq.Ft.







FIRST FLOOR PLAN

FLAT	Flat Area	Terrace Area	Total Area
A	1912.73	239.29	2152 Sq.Ft.
B	1465.27	585.73	2051 Sq.Ft.
C	1504.99	381.23	1886 Sq.Ft.

FLAT	Flat Area	Terrace Area	Total Area
D	1589.32	525.64	2115 Sq.Ft.
E	2373.72	538.8	2913 Sq.Ft.
F	1862.12	154.83	2017 Sq.Ft.

FLAT	Flat Area	Terrace Area	Total Area
G	1716.17	385.69	2102 Sq.Ft.
H	1563.12	380.25	1943 Sq.Ft.
I	1545.97	374.11	1920 Sq.Ft.





2nd To 7th FLOOR PLAN

FLAT	2nd, 4th & 6th	3rd, 5th & 7th
A	1938 Sq.Ft.	1993 Sq.Ft.
G	1739 Sq.Ft.	1828 Sq.Ft.
H	1584 Sq.Ft.	1666 Sq.Ft.
I	1567 Sq.Ft.	1632 Sq.Ft.

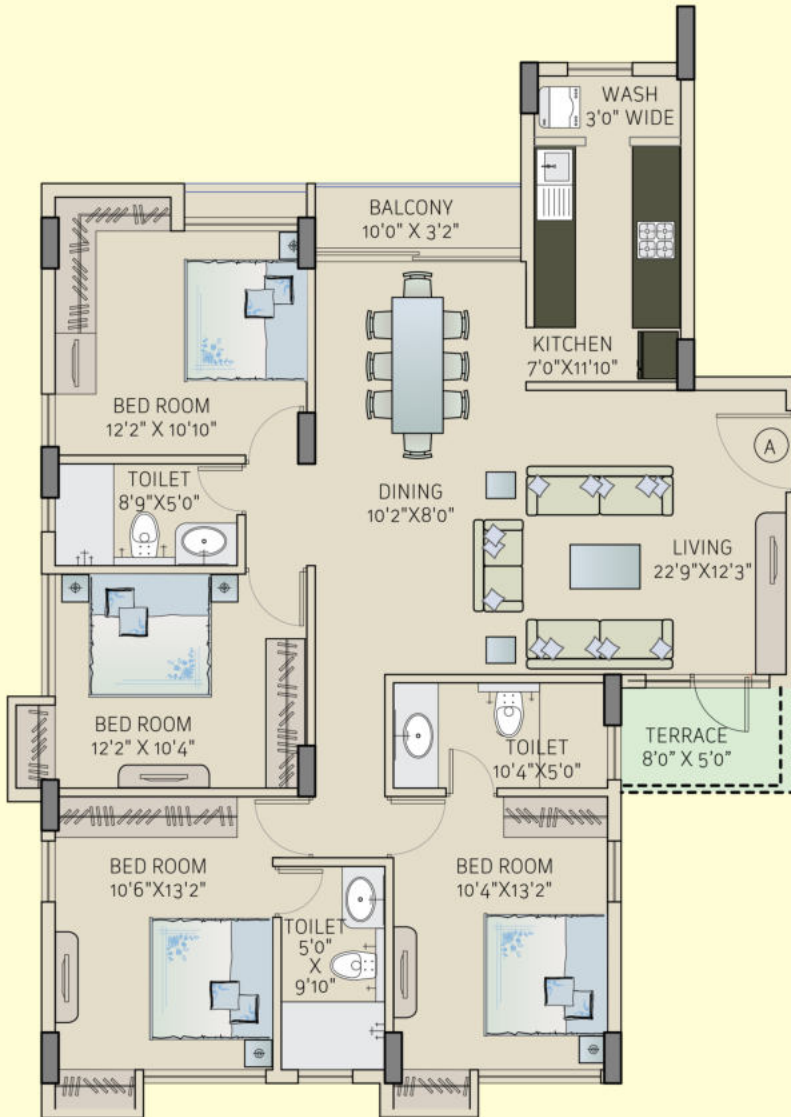
FLAT	2nd to 7th
B	1485 Sq.Ft.
C	1525 Sq.Ft.
D	1611 Sq.Ft.

FLAT	2nd to 7th
E	2406 Sq.Ft.
F	1887 Sq.Ft.

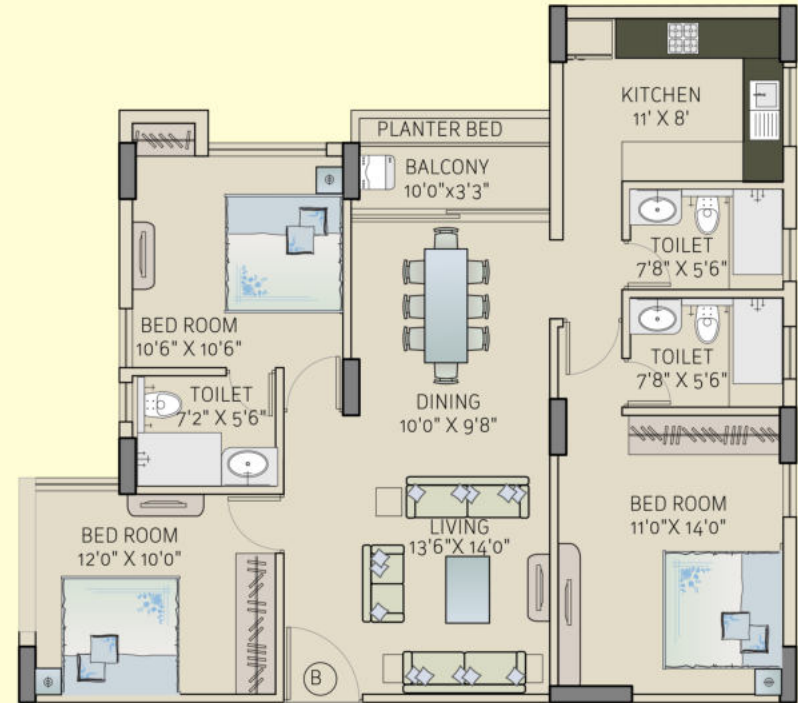
MASTER PLAN  
ALL THE FLOOR PLANS ARE VASTU COMPLIANT







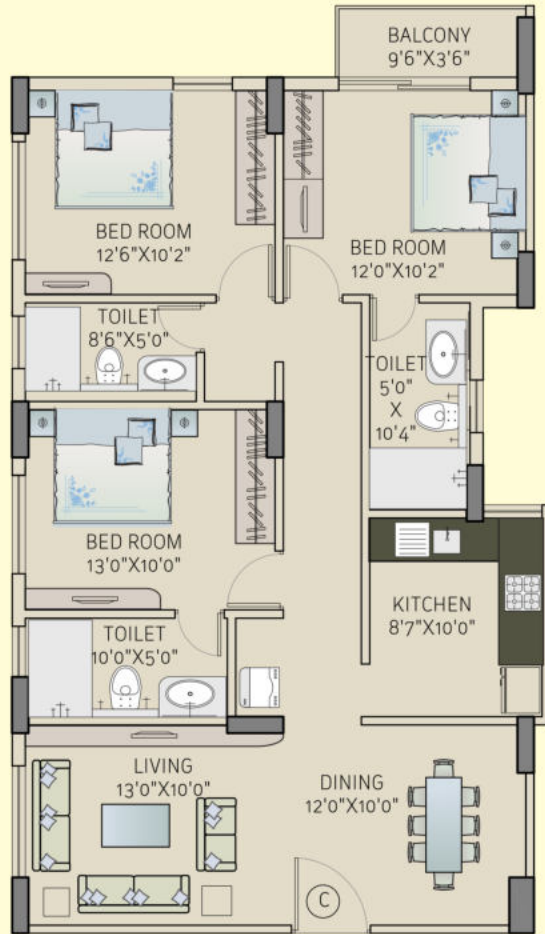
FLAT A	SBU
2nd, 4th, 6th FLOOR PLAN	1938 Sq.Ft.
3rd, 5th, 7th FLOOR PLAN	1993 Sq.Ft.
TERRACE on 3rd, 5th, 7th FLOOR	



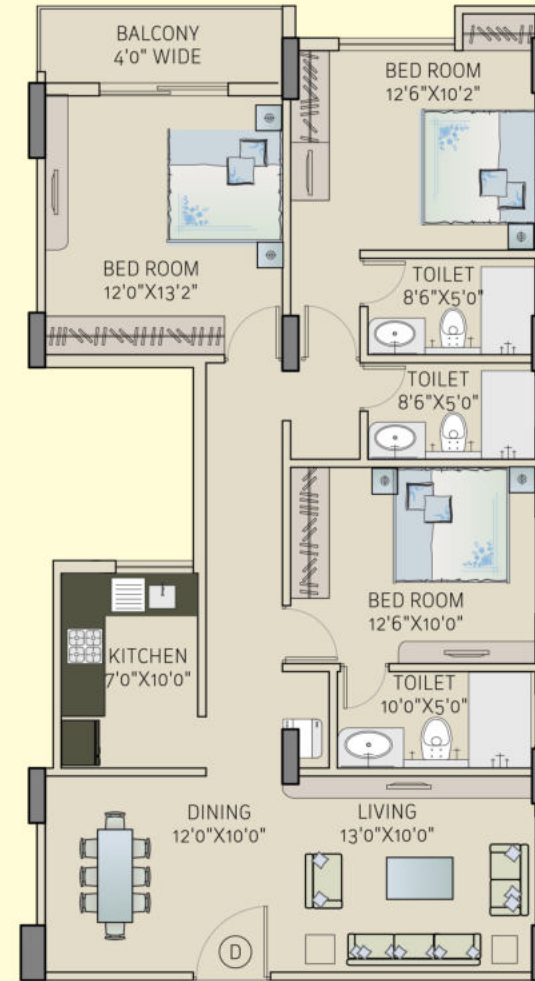
FLAT B	SBU
2nd to 7th FLOOR PLAN	1485 Sq.Ft.





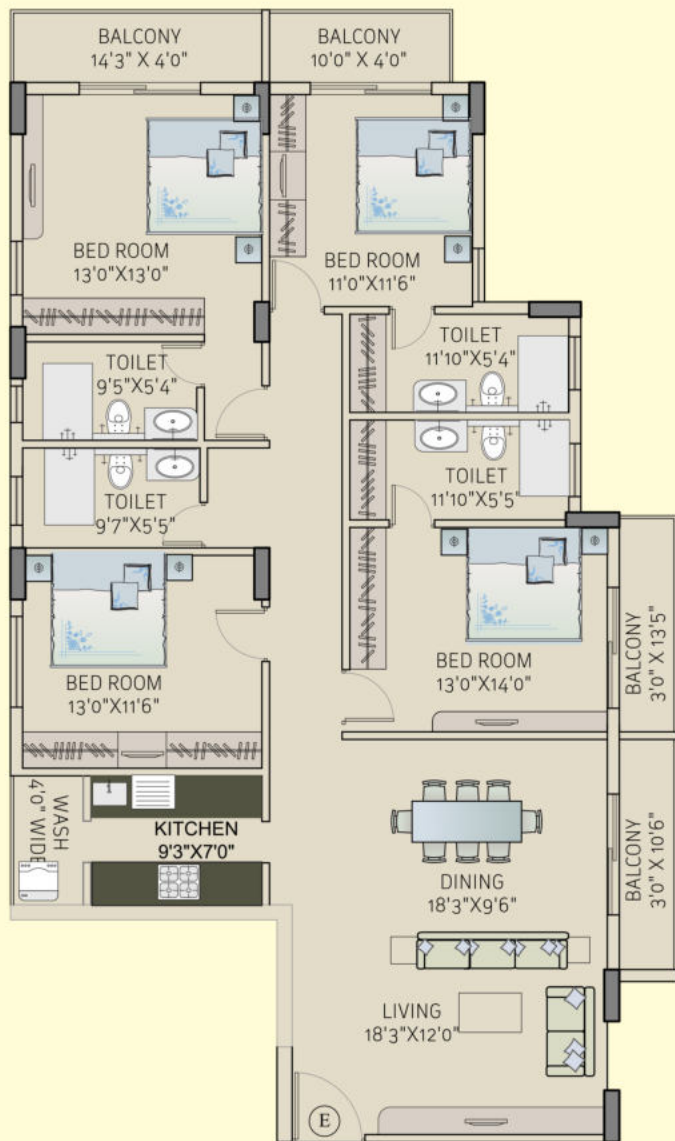


FLAT C	SBU
2nd to 7th FLOOR PLAN	1525 Sq.Ft.

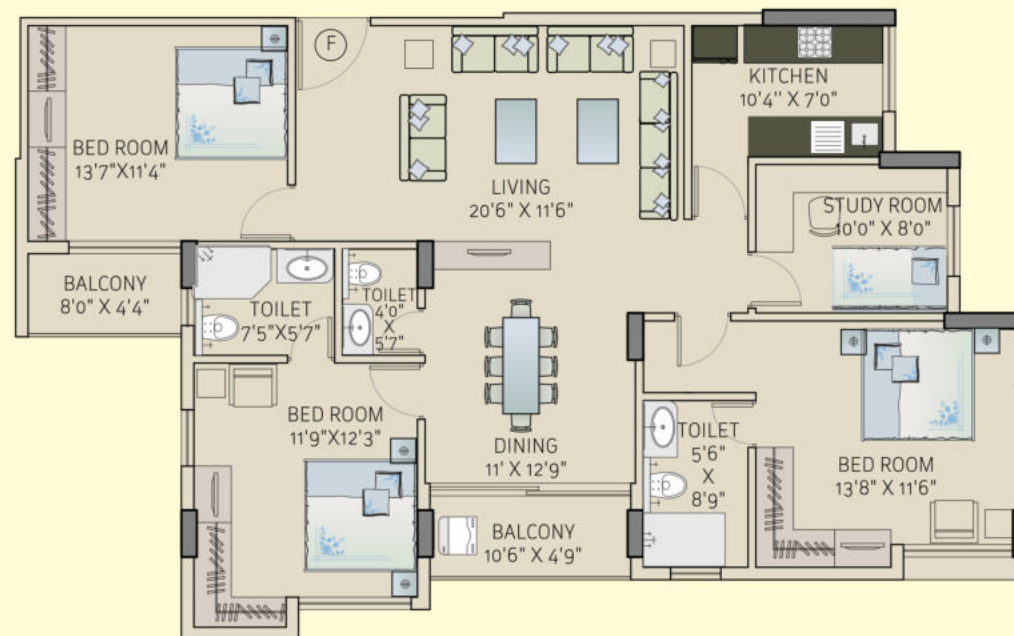


FLAT D	SBU
2nd to 7th FLOOR PLAN	1611 Sq.Ft.





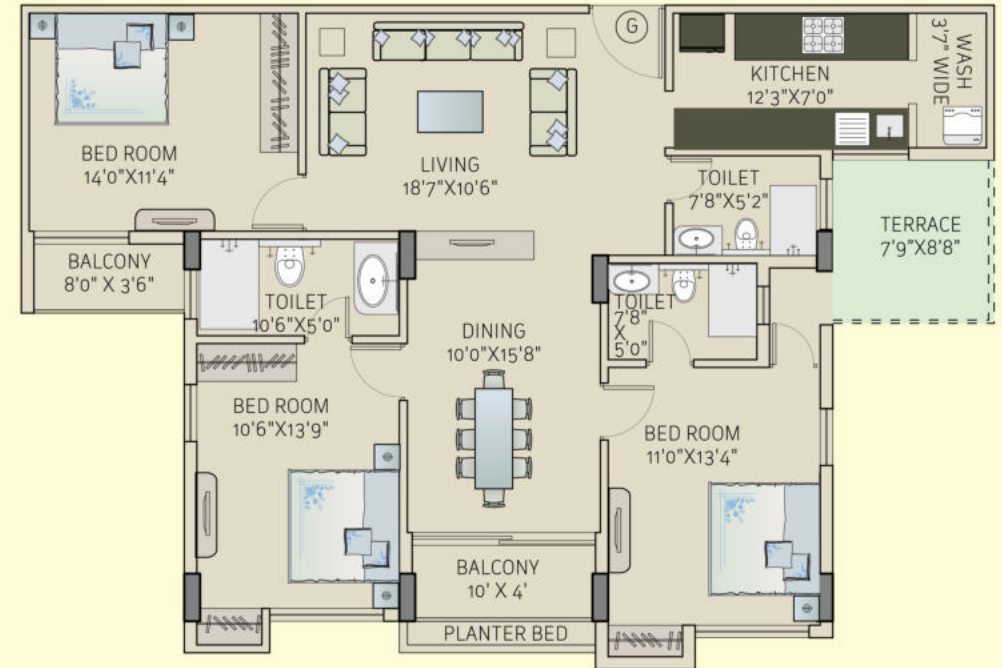
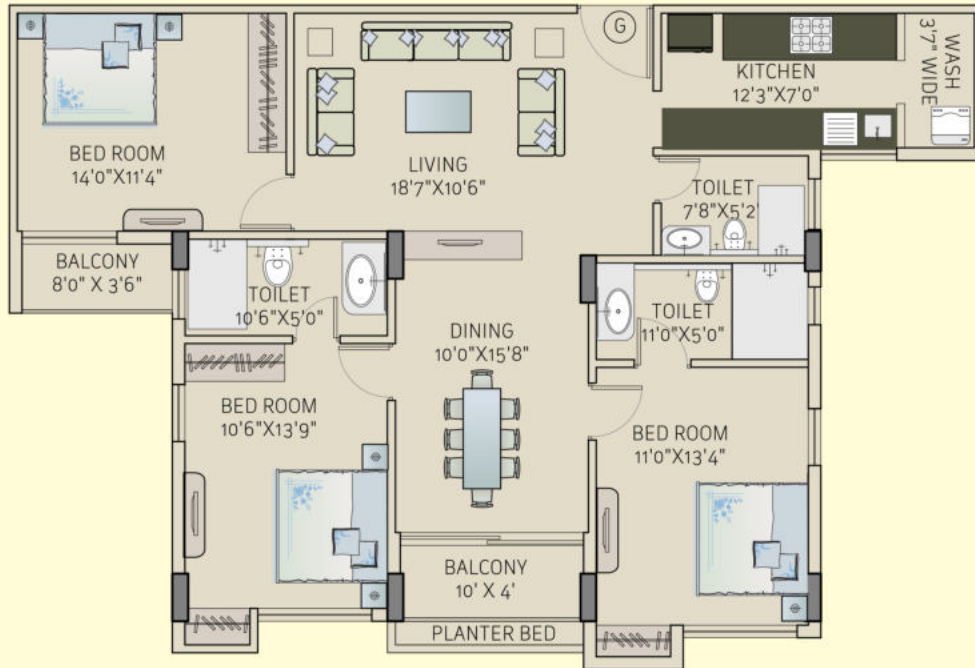
FLAT E	SBU
2nd to 7th FLOOR PLAN	2406 Sq.Ft.



FLAT F	SBU
2nd to 7th FLOOR PLAN	1887 Sq.Ft.

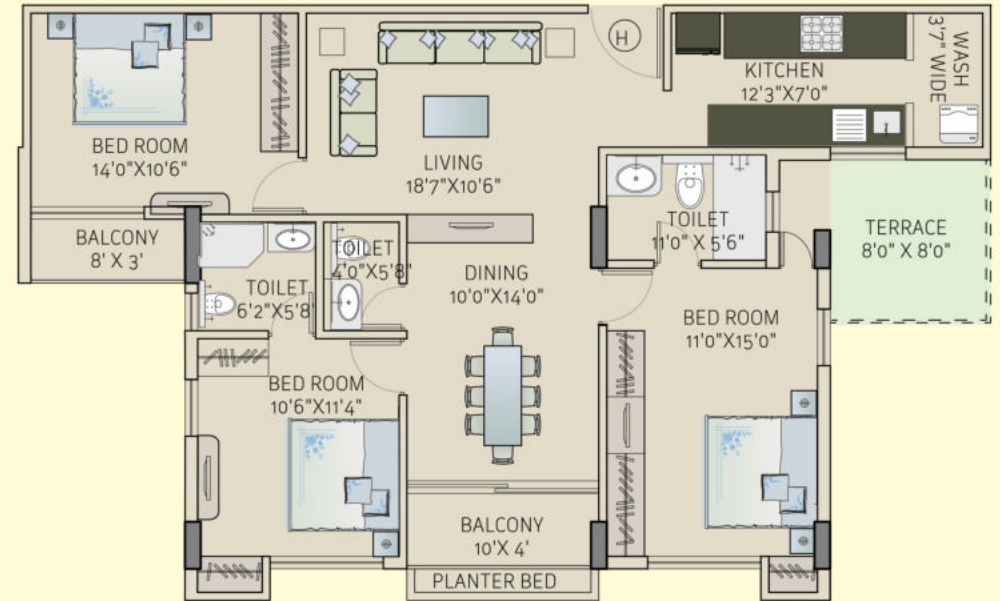
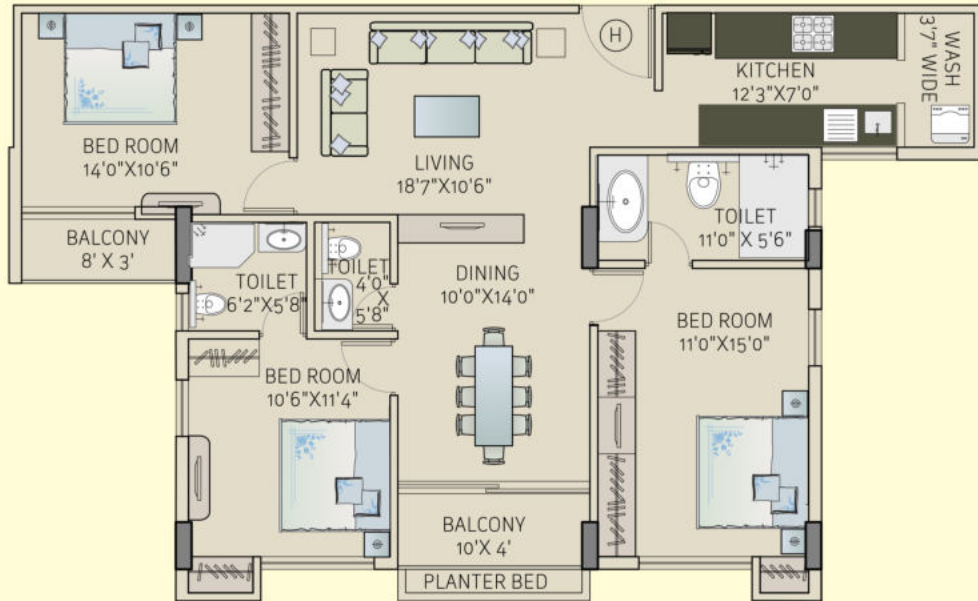






FLAT G	SBU
2nd, 4th, 6th, FLOOR PLAN	1739 Sq.Ft.
3rd, 5th, 7th FLOOR PLAN	1828 Sq.Ft.
TERRACE on 3rd, 5th, 7th FLOOR	

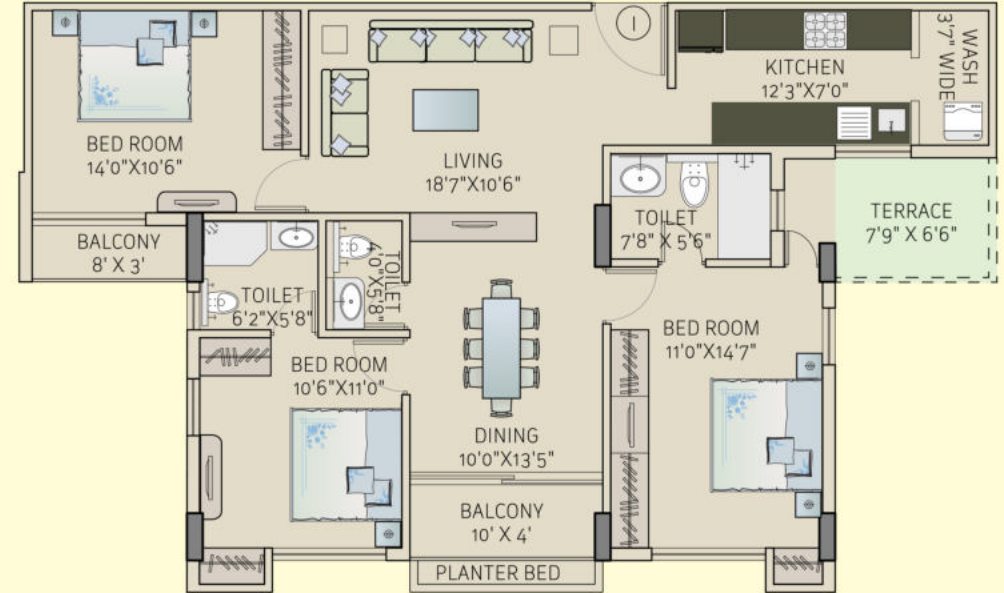
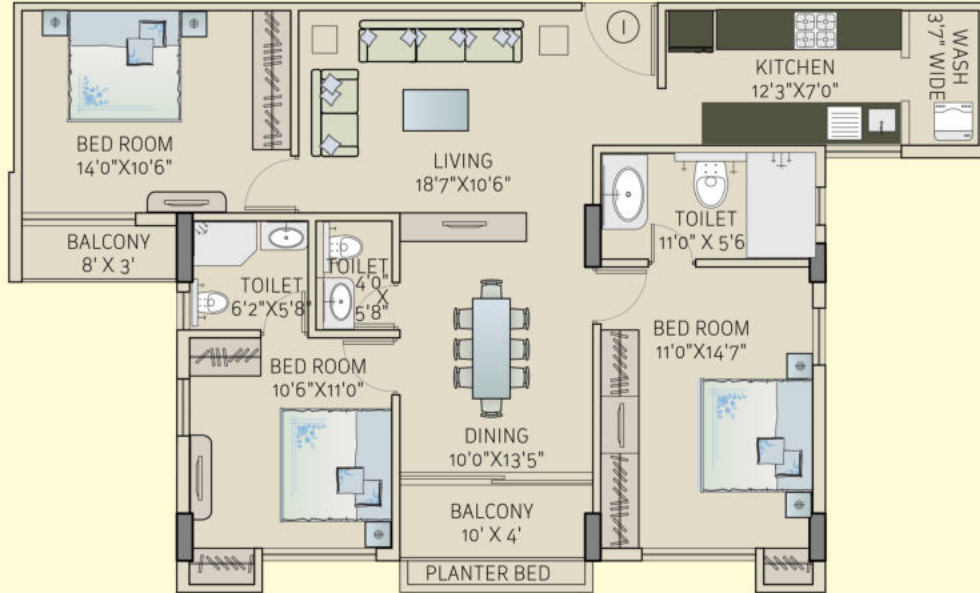




FLAT H	SBU
2nd, 4th, 6th, FLOOR PLAN	1584 Sq.Ft.
3rd, 5th, 7th FLOOR PLAN	1666 Sq.Ft.
TERRACE on 3rd, 5th, 7th FLOOR	







FLAT I	SBU
2nd, 4th, 6th, FLOOR PLAN	1567 Sq.Ft.
3rd, 5th, 7th FLOOR PLAN	1632 Sq.Ft.
TERRACE on 3rd, 5th, 7th FLOOR	



# SPECIFICATIONS

## Living/Dining/Lobby/Passage

**Floor** : Vitrified Tiles  
**Walls & Ceilings** : POP/Wall Putty

## Bedrooms

**Floor** : Wooden laminated flooring in Master Bedroom/Vitrified Tiles  
**Walls & Ceilings** : POP/Wall Putty

## Kitchen

**Walls** : Rectified joint free tiles up to 2' on counter walls and wash areas  
**Floor** : Vitrified Tiles  
**Counter** : Granite Counter  
**Fitting Fixtures** : Stainless Steel Sink with Jaquar or equivalent make  
**Wall & Ceiling** : POP/Wall Putty

## Bathrooms

**Walls** : Joint free rectified tiles  
**Floors** : Anti Skid Ceramic tiles  
**Sanitary Ware** : Parryware/Hindware or equivalent brands  
**CP Fittings** : Jaquar or equivalent CP make

## Doors & Windows

**Entrance Doors** : Decorated Flush Doors  
**Internal Doors** : Water and Termite Proof Flush Doors  
**Windows** : Anodized Aluminum sliding windows

## Electrical

**Modular switches** : Northwest/Havells/Anchor or equivalent make & copper wiring

## Power Backup

**Common Areas** : 100%  
**Apartments** : 2 kva - 3.5 kva depending on the apartment size

## Security Systems

**Intercom**  
**CCTV Camera**

## Lobby

**Entrance** : Exquisitely designed at ground floor  
**Lift** : 4 Automatic lifts of Kone/Otis/Johnson or equivalent make





## FEW OF OUR LANDMARK PROJECTS



Saltee Spacio



DN 18



JC 25



Saltee Plaza



JC 21



Saltee Itch

# DREAM AND REALITY EMBRACED



Over the last decade, with an indomitable team and incessant passion, Saltee Group has been providing the new-age real estate solutions across all sections of society. And this led to the creation of Saltee Spacio, Saltee Chrome, Saltee Emerald, Saltee Vision, Saltech etc.

The success of these projects inspired them to create more. So, the journey is on with Saltee Plaza, Saltee Courtyard, Saltee Identity, Saltee Synergy and more. Building on this experience and expertise, they are now ready with a pan-India growth strategy to deliver an unprecedented number of innovative projects in the forthcoming years.



#### Developer



#### Saltee Infrastructure Ltd

AE 40, Sector 1, Salt Lake City, Kolkata- 700 064

Phone : +91 33 4021 5400/5401 | Fax : +91 33 2358 7621

E-mail : [saltee@salteegroup.com](mailto:saltee@salteegroup.com) | Web : [www.salteegroup.com](http://www.salteegroup.com)

#### Architect



Web : [www.massandvoid.com](http://www.massandvoid.com)

#### This Project Financed By



This property is mortgaged with LIC Housing Finance Ltd.

Hindusthan Buildings, Ground Floor

4, Chittaranjan Avenue, Kolkata – 700072

Email: [am\\_kolkataec@lichousing.com](mailto:am_kolkataec@lichousing.com), Phone: (033) 2212 4260.

## Markering Partner



**Address: Stesalit Towers, Office #7, 4<sup>th</sup> floor, Plot No E2-3,  
Block - EP & GP, Sector V, Saltlake, Kolkata - 700091**

**Contact No: +91 9073338396**

**[www.510earth.com](http://www.510earth.com)**