



At the Ideal Group, the word 'green' not only signifies springtime, growth and nature, nor is it merely the colour of growing grass and new leaves, 'green' is a way of life.

Ideal Greens is our pledge to nature and life. It is our humble initiative to maintain the equilibrium in the eco system and preserve the world in which we live. It is our way of trying to retain the balance between green spaces, blue skies, water and thoughtful architecture.

In short, Ideal Greens is all about respecting nature and living life within its bounty.







Ideal Greens. Envisaged by the Ideal Group, designed by celebrated architect Hafeez Contractor and landscaped by LSG group of USA.

Kolkata's largest, Green, gated residential community spread across 11.7 acres.

852 air-conditioned apartments offering options of 2, 3 and 4 BHK.

Planned across 10 towers of varying height between G+14 and G+18 floors.

Presence of a large natural water body to add to the 82% landscaped open space.

Ideal Greens.

Acres of silence. Envelopes of chlorophyll.
And the harvest of a life well lived.



Ideal Greens.

Where the colour of the
main blossom is green!



At Ideal Greens, living is not within boxed apartments. It is completely out-of-the-box!

Ideal Greens offers 2/3/4 BHK and duplex air-conditioned apartments, ranging between 1,220 sq. ft and 3,525 sq. ft.

Ideal Greens is built in such a manner that it overlooks the sprawling green golf courses at the Tollygunge Club and the Royal Calcutta Golf Club.



At Ideal Greens,
convenience is a synonym.

South Kolkata. The green cover of the city.

Ideal Greens. Located in close proximity to the Tollygunge metro station is well connected to the rest of Kolkata.

Close to all the places you need to reach within minutes.

Location map



- 7 minutes from the Tollygunge metro station • 15 minutes from Rashbehari-Chetla crossing (Kalighat metro station)
- 7 minutes from the proposed Behala Chowrasta metro station

852 different families. One community. The club that binds the community together. Offering a banquet hall with spacious and manicured landscaped gardens to celebrate special occasions and festivals.



The Club Plush also has the following attractions:



Banquet hall with party lawn



Swimming pool



Indoor badminton court



Table tennis



Squash



Pool table



Children's games room



Jogging track



Well-equipped gymnasium



Cricket field

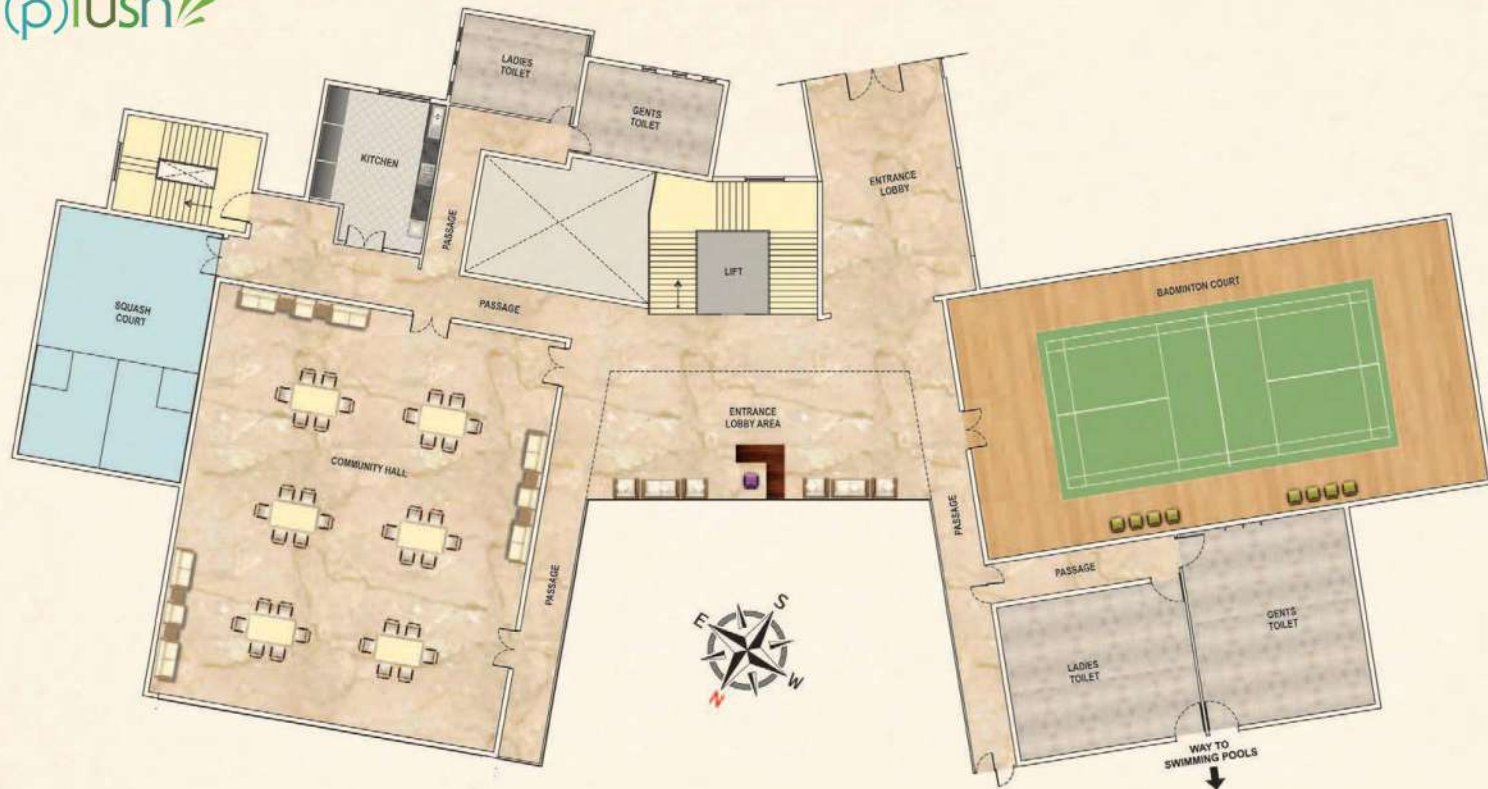
At Ideal Greens, there is no need to step out.

Every hour spent at home is a happy hour.

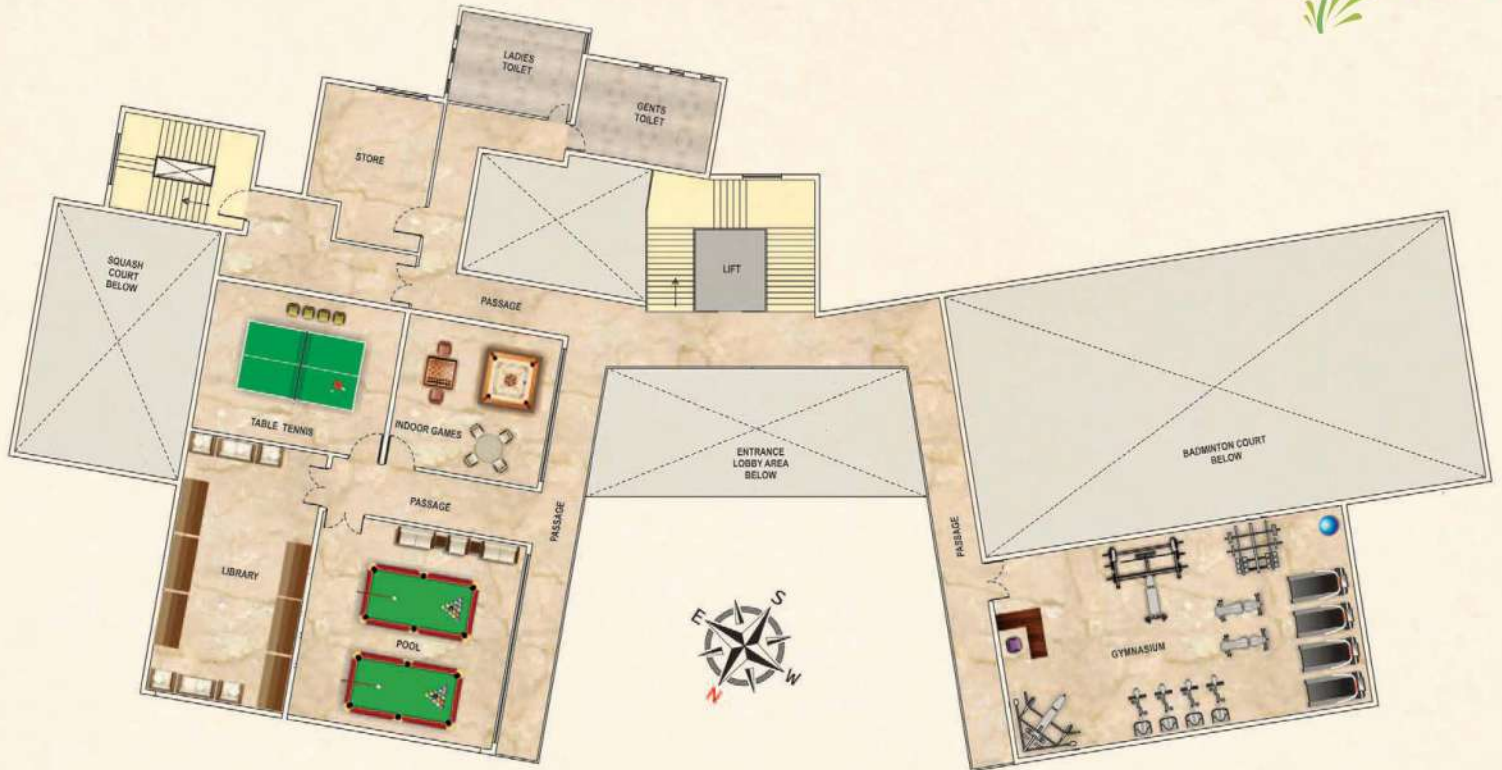
Complete with an inhouse resident's club, gymnasium, cricket field and jogging track.



Ground Floor Plan



First Floor Plan





Ideal Greens.

Where wellness is a way of life!



Ideal Greens will be built in conformance to green building standards as laid down by the Indian Green Building Council (IGBC) and will pursue a 'Gold' rating under the IGBC Green Homes rating system.

Green features at Ideal Greens are focused on one central aspect: healthy living and lesser consumption of natural resources.

Starting from the diligent sourcing of raw materials to the optimum utilization of water and energy, Ideal Greens truly has a green conscience.

From features such as rainwater harvesting and recycling of waste water for landscaping and flushing purposes to enhanced indoor air quality, natural light during the day and the sensitivity to the environment, Ideal Greens will be the first-of-its-kind socially futuristic and sustainable lifestyle model.

UPDATED SITE PLAN

510 EARTH
TOP PROPERTY | BEST DEALS

ideal
Greens

Motilal Gupta Road

- ★ 1. Main Entry
- ★ 2. Parking
- ★ 3. Children's Play Area
- ★ 4. Ramp To Basement
- ★ 5. Water Feature
- ★ 6. Seating
- ★ 7. Sculpture
- ★ 8. Existing Waterbody
- ★ 9. Walkway
- ★ 10. Deck
- ★ 11. Basketball Court
- ★ 12. Flower Bed
- ★ 13. Banquet Lawn
- ★ 14. Wooden Deck
- ★ 15. Kid's Pool
- ★ 16. Lap Pool
- ★ 17. Interactive Water Feature
- ★ 18. Jacuzzi
- ★ 19. Club
- ★ 20. Cricket Field
- ★ 21. Space For Services
- ★ 22. Multipurpose Lawn / Play Area
- ★ 23. Toddler's Play Area
- ★ 24. Interactive Green Zone
- ★ 25. Pathway

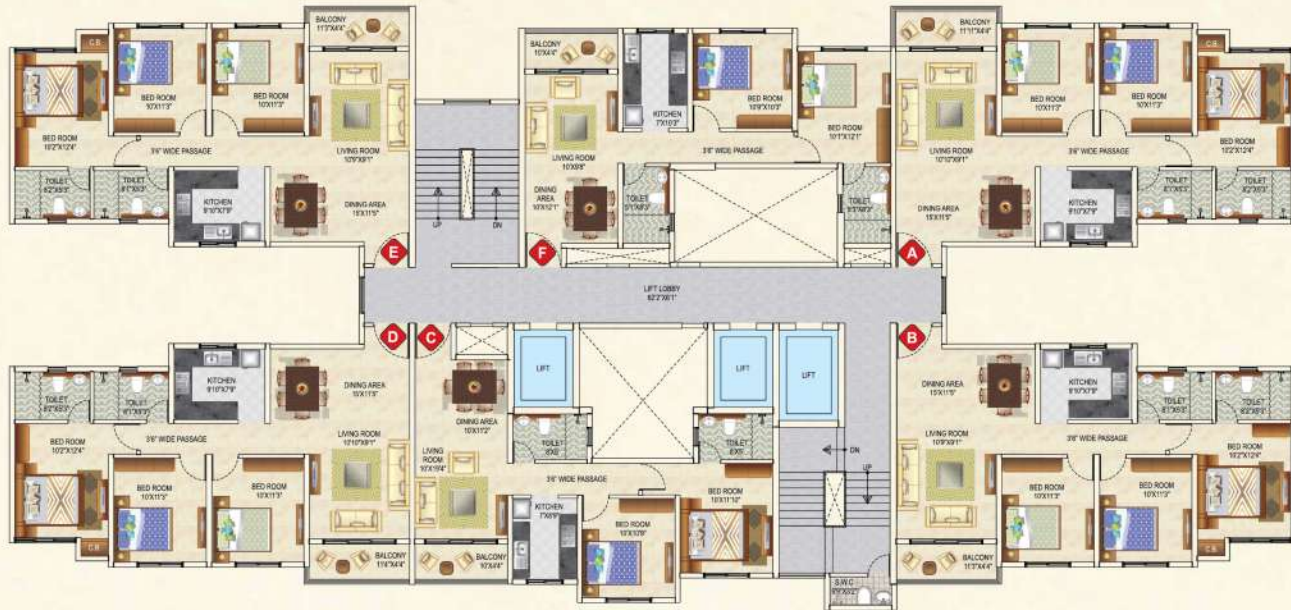


Developed by

IDEAL
pillars of trust

Marketing Partner 510 Earth

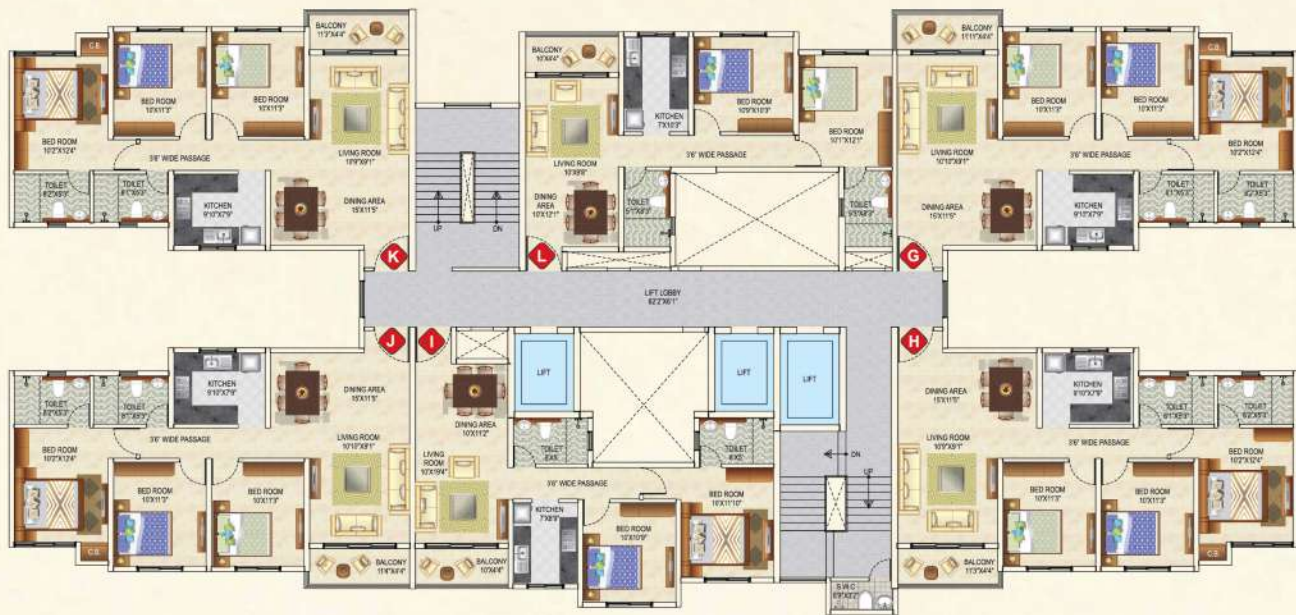
Stesalit Towers,
Office #7, 4th floor, Plot No E2-3, Block - EP & GP, Sector V,
Salt Lake, Kolkata - 700091
Ph: +91-9073338396



AREA STATEMENT		
Flat No.	Type	Area (sq.ft)
A	3 BHK	1390
B	3 BHK	1400
C	2 BHK	1075
D	3 BHK	1385
E	3 BHK	1400
F	2 BHK	1085

Block - Acacia - I
1st To 18th Floor Plan

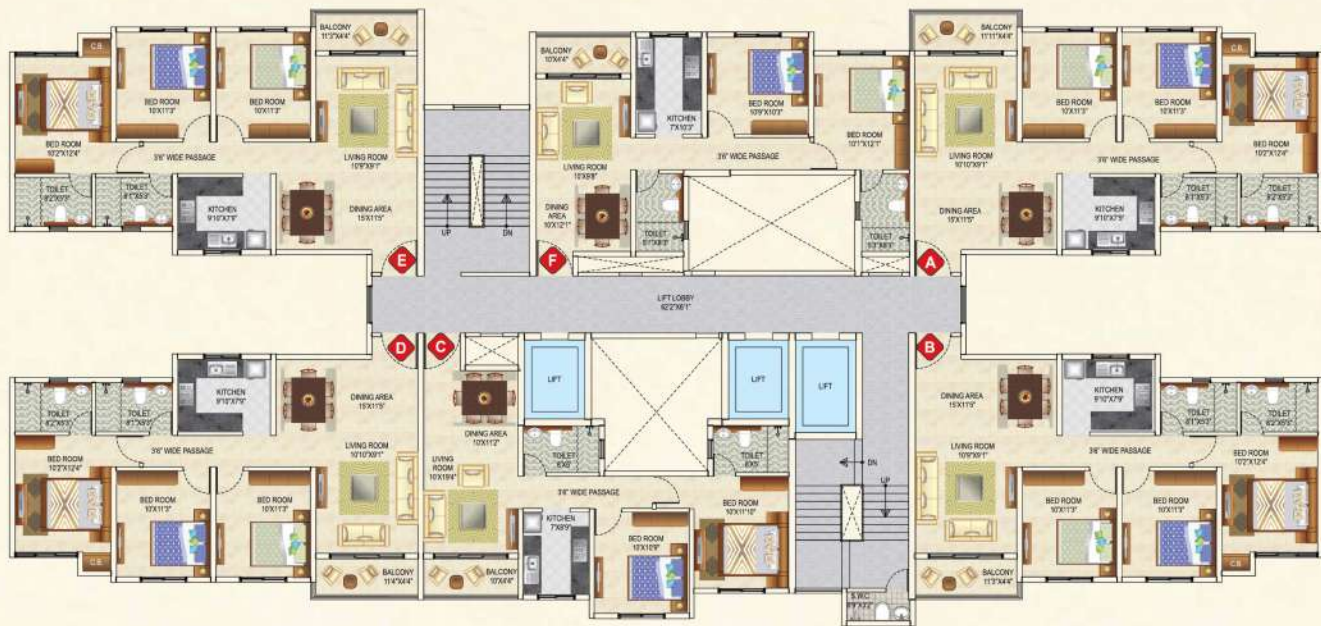




AREA STATEMENT		
Flat No.	Type	Area (sq.ft)
G	3 BHK	1390
H	3 BHK	1400
I	2 BHK	1075
J	3 BHK	1385
K	3 BHK	1400
L	2 BHK	1085

Block - Acacia - II
1st To 18th Floor Plan





AREA STATEMENT		
Flat No.	Type	Area (sq.ft)
A	3 BHK	1390
B	3 BHK	1400
C	2 BHK	1075
D	3 BHK	1385
E	3 BHK	1400
F	2 BHK	1085

Block - Begonia
1st To 18th Floor Plan





Camelia

1st - 6th Floor Plan

AREA STATEMENT

Flat No.	Type	Area (sq. ft)
A	3 BHK	1,710
B	3 BHK	1,720
C	2 BHK	1,240
D*	3 BHK	1,710
E*	3 BHK	1,720
F	2 BHK	1,220

* Not available on 1st & 2nd Floor



7th, 10th & 13th Floor Plan

AREA STATEMENT

Flat No.	Type	Area (sq. ft)
A	3 BHK	1,830
B	3 BHK	1,835
C	2 BHK	1,355
D	3 BHK	1,820
E	3 BHK	1,830
F	2 BHK	1,325





Camelia



8th, 11th & 14th
Floor Plan

AREA STATEMENT

Fiat No.	Type	Area (sq. ft)
A	3 BHK	1,820
B	3 BHK	1,825
C	2 BHK	1,340
D*	3 BHK	1,815
E*	3 BHK	1,825
F	2 BHK	1,320

* Not available on 14th Floor



9th & 12th
Floor Plan

AREA STATEMENT

Fiat No.	Type	Area (sq. ft)
A	3 BHK	1,825
B	3 BHK	1,835
C	2 BHK	1,335
D	3 BHK	1,825
E	3 BHK	1,835
F	2 BHK	1,325





Daffodil

1st - 6th Floor Plan

AREA STATEMENT

Flat No.	Type	Area (sq. ft)
A	3 BHK	1,710
B	3 BHK	1,720
C	2 BHK	1,240
D	3 BHK	1,710
E	3 BHK	1,720
F	2 BHK	1,220



7th, 10th, 13th & 16th Floor Plan

AREA STATEMENT

Flat No.	Type	Area (sq. ft)
A	3 BHK	1,830
B	3 BHK	1,835
C	2 BHK	1,355
D*	3 BHK	1,820
E*	3 BHK	1,830
F	2 BHK	1,325

* Not available on 16th Floor





Daffodil

ideal
Greens

8th, 11th & 14th
Floor Plan

AREA STATEMENT		
Fiat No.	Type	Area (sq. ft)
A	3 BHK	1,820
B	3 BHK	1,825
C	2 BHK	1,340
D	3 BHK	1,815
E	3 BHK	1,825
F	2 BHK	1,320

510 EARTH
TOP PROPERTY | BEST DEALS

9th, 12th & 15th
Floor Plan

AREA STATEMENT		
Fiat No.	Type	Area (sq. ft)
A	3 BHK	1,825
B	3 BHK	1,835
C	2 BHK	1,335
D*	3 BHK	1,825
E*	3 BHK	1,835
F	2 BHK	1,325

* Not available on 15th Floor





Eucalyptus

1st - 6th Floor Plan



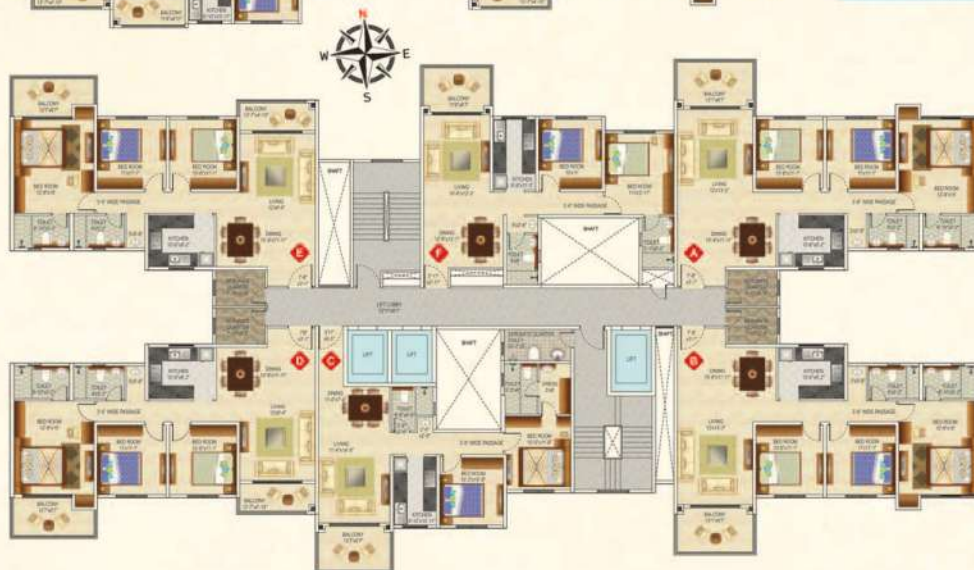
AREA STATEMENT

Flat No.	Type	Area (sq. ft)
A	3 BHK	1,710
B	3 BHK	1,720
C	2 BHK	1,240
D	3 BHK	1,710
E	3 BHK	1,720
F	2 BHK	1,220

7th, 10th, 13th & 16th Floor Plan

AREA STATEMENT

Flat No.	Type	Area (sq. ft)
A	3 BHK	1,830
B	3 BHK	1,835
C	2 BHK	1,355
D	3 BHK	1,820
E	3 BHK	1,830
F	2 BHK	1,325





Eucalyptus

ideal
Greens

8th, 11th, 14th &
17th Floor Plan

AREA STATEMENT

Flat No.	Type	Area (sq. ft)
A	3 BHK	1,820
B	3 BHK	1,825
C*	2 BHK	1,340
D	3 BHK	1,815
E	3 BHK	1,825
F	2 BHK	1,320

510
EARTH
TOP PROPERTY | BEST DEALS

9th, 12th, 15th &
18th Floor Plan

AREA STATEMENT

Flat No.	Type	Area (sq. ft)
A	3 BHK	1,825
B	3 BHK	1,835
C	2 BHK	1,335
D*	3 BHK	1,825
E*	3 BHK	1,835
F	2 BHK	1,325

* Not available on 18th Floor





Fern

2nd Floor Plan

AREA STATEMENT

Flat No.	Type	Area (sq. ft)
A	4 BHK	2,050
B*	3 BHK	2,050

* Attached private garden of 4,700 sq. ft

* Duplex lower level



3rd Floor Plan

AREA STATEMENT

Flat No.	Type	Area (sq. ft)
A	4 BHK	2,050
B*	3 BHK	1,620

* Duplex upper level





Fern



4th, 5th & 6th
Floor Plan

AREA STATEMENT

Fiat No.	Type	Area (sq. ft)
A	4 BHK	2,050
B	4 BHK	2,050
C	4 BHK	2,050
D	4 BHK	2,050



7th, 10th, 13th &
16th Floor Plan

AREA STATEMENT

Fiat No.	Type	Area (sq. ft)
A	4 BHK	2,150
B	4 BHK	2,150
C	4 BHK	2,150
D	4 BHK	2,150



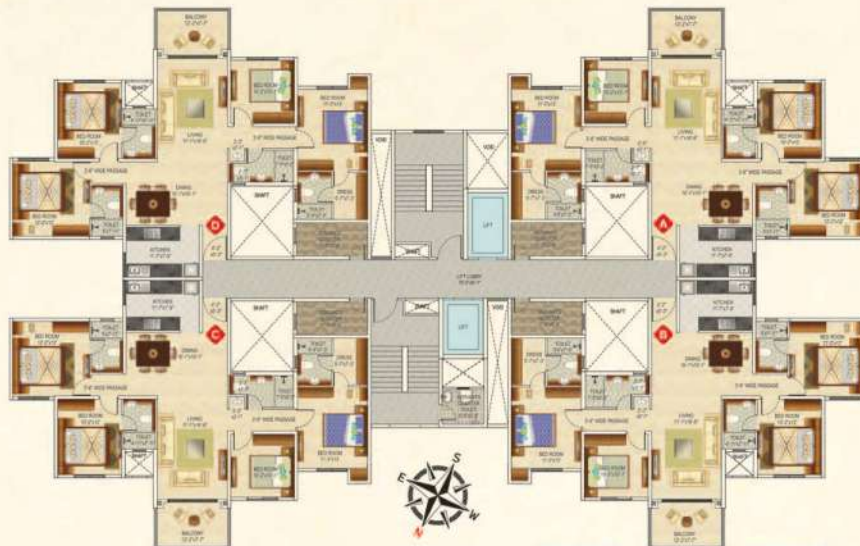


Fern

8th, 11th, 14th &
17th Floor Plan

AREA STATEMENT

Flat No.	Type	Area (sq. ft)
A	4 BHK	2,160
B	4 BHK	2,160
C	4 BHK	2,160
D	4 BHK	2,160



9th, 12th, 15th &
18th Floor Plan

AREA STATEMENT

Flat No.	Type	Area (sq. ft)
A	4 BHK	2,150
B	4 BHK	2,150
C*	4 BHK	2,150
D*	4 BHK	2,150

* Not available on 18th Floor





Gardenia



2nd Floor Plan

AREA STATEMENT

Flat No.	Type	Area (sq. ft)
C**	3 BHK	2,050
D	4 BHK	2,050

- * Attached private garden of 4,700 sq. ft
- * Duplex lower level



3rd Floor Plan

AREA STATEMENT

Flat No.	Type	Area (sq. ft)
C*	3 BHK	1,620
D	4 BHK	2,050

- * Duplex upper level





Gardenia

4th, 5th & 6th Floor Plan



AREA STATEMENT

Flat No.	Type	Area (sq. ft)
A	4 BHK	2,050
B	4 BHK	2,050
C	4 BHK	2,050
D	4 BHK	2,050

7th, 10th, 13th & 16th Floor Plan

AREA STATEMENT

Flat No.	Type	Area (sq. ft)
A	4 BHK	2,150
B	4 BHK	2,150
C	4 BHK	2,150
D	4 BHK	2,150

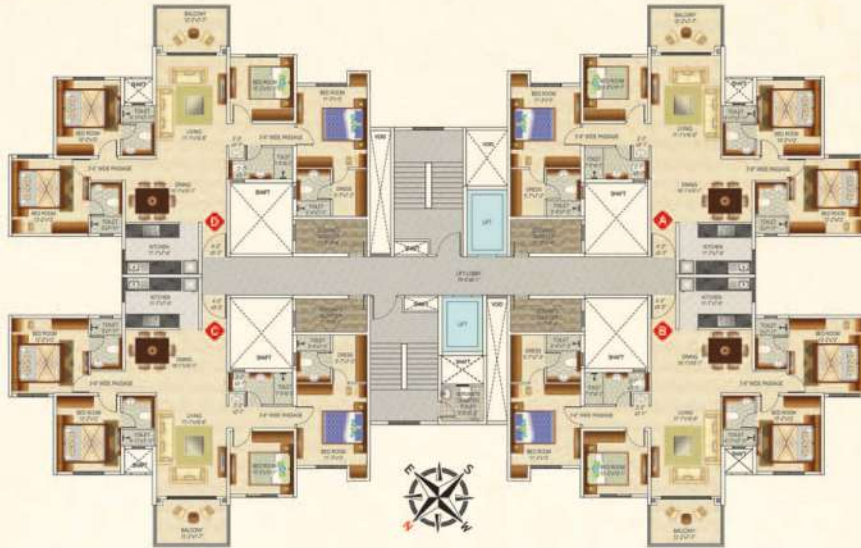


Gardenia

8th, 11th, 14th & 17th Floor Plan

AREA STATEMENT

Flat No.	Type	Area (sq. ft)
A	4 BHK	2,160
B	4 BHK	2,160
C	4 BHK	2,160
D	4 BHK	2,160



9th, 12th, 15th & 18th Floor Plan

AREA STATEMENT

Flat No.	Type	Area (sq. ft)
A*	4 BHK	2,150
B*	4 BHK	2,150
C	4 BHK	2,150
D	4 BHK	2,150

* Not available on 18th Floor





Hyacinth

1st - 6th Floor Plan

AREA STATEMENT

Flat No.	Type	Area (sq. ft)
A	3 BHK	1,710
B	3 BHK	1,720
C	2 BHK	1,240
D	3 BHK	1,710
E	3 BHK	1,720
F	2 BHK	1,220



7th, 10th, 13th & 16th Floor Plan

AREA STATEMENT

Flat No.	Type	Area (sq. ft)
A	3 BHK	1,830
B	3 BHK	1,835
C	2 BHK	1,355
D	3 BHK	1,820
E	3 BHK	1,830
F	2 BHK	1,325





Hyacinth

ideal
Greens

8th, 11th, 14th &
17th Floor Plan

AREA STATEMENT

Fiat No.	Type	Area (sq. ft)
A	3 BHK	1,820
B	3 BHK	1,825
C	2 BHK	1,340
D	3 BHK	1,815
E	3 BHK	1,825
F	2 BHK	1,320

510
EARTH
TOP PROPERTY | BEST DEALS

9th, 12th, 15th &
18th Floor Plan

AREA STATEMENT

Fiat No.	Type	Area (sq. ft)
A*	3 BHK	1,825
B*	3 BHK	1,835
C	2 BHK	1,335
D	3 BHK	1,825
E	3 BHK	1,835
F	2 BHK	1,325

* Not available on 18th Floor





Ivy

1st - 6th Floor Plan

AREA STATEMENT

Flat No.	Type	Area (sq. ft)
A	3 BHK	1,710
B	3 BHK	1,720
C	2 BHK	1,240
D	3 BHK	1,710
E	3 BHK	1,720
F	2 BHK	1,220



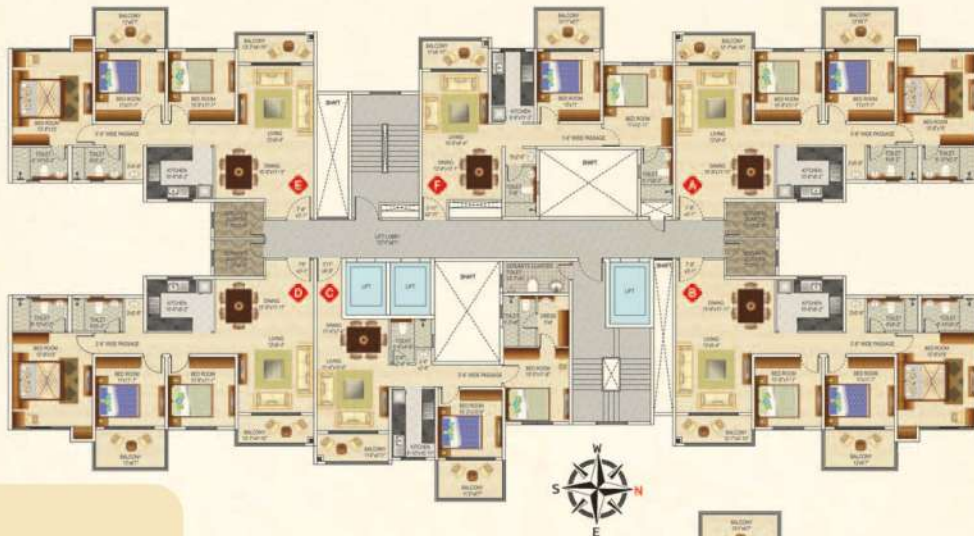
7th, 10th, 13th & 16th Floor Plan

AREA STATEMENT

Flat No.	Type	Area (sq. ft)
A*	3 BHK	1,830
B*	3 BHK	1,835
C	2 BHK	1,355
D	3 BHK	1,820
E	3 BHK	1,830
F	2 BHK	1,325

* Not available on 16th Floor





Ivy

ideal
Greens

8th, 11th & 14th Floor Plan

AREA STATEMENT

Fiat No.	Type	Area (sq. ft)
A	3 BHK	1,820
B	3 BHK	1,825
C	2 BHK	1,340
D	3 BHK	1,815
E	3 BHK	1,825
F	2 BHK	1,320

510 EARTH
TOP PROPERTY | BEST DEALS

9th, 12th & 15th Floor Plan

AREA STATEMENT

Fiat No.	Type	Area (sq. ft)
A*	3 BHK	1,825
B*	3 BHK	1,835
C	2 BHK	1,335
D	3 BHK	1,825
E	3 BHK	1,835
F	2 BHK	1,325

* Not available on 15th Floor





Jasmine

1st - 6th Floor Plan

AREA STATEMENT

Flat No.	Type	Area (sq. ft)
A*	3 BHK	1,710
B*	3 BHK	1,720
C	2 BHK	1,240
D	3 BHK	1,710
E	3 BHK	1,720
F	2 BHK	1,220

* Not available on 1st & 2nd Floor



7th, 10th & 13th Floor Plan

AREA STATEMENT

Flat No.	Type	Area (sq. ft)
A	3 BHK	1,830
B	3 BHK	1,835
C	2 BHK	1,355
D	3 BHK	1,820
E	3 BHK	1,830
F	2 BHK	1,325





Jasmine

ideal
Greens

8th, 11th & 14th Floor Plan

AREA STATEMENT

Fiat No.	Type	Area (sq. ft)
A*	3 BHK	1,820
B*	3 BHK	1,825
C	2 BHK	1,340
D	3 BHK	1,815
E	3 BHK	1,825
F	2 BHK	1,320

* Not available on 14th Floor

510 EARTH
TOP PROPERTY | BEST DEALS

9th & 12th Floor Plan

AREA STATEMENT

Fiat No.	Type	Area (sq. ft)
A	3 BHK	1,825
B	3 BHK	1,835
C	2 BHK	1,335
D	3 BHK	1,825
E	3 BHK	1,835
F	2 BHK	1,325





Specifications

WALLS

- ✿ Internal and external: RCC
- ✿ Common area: paint
- ✿ External: textured paint

FLOORING

- ✿ Tiles in living rooms and bedrooms
- ✿ Marble / Tiles / Stone in all common areas

ELECTRICAL

- ✿ Concealed copper wiring
- ✿ Sufficient light and power points
- ✿ Television / Telephone points in living / dining room and all bedrooms
- ✿ A.C. of reputed brand in living / dining room and all bedrooms

KITCHEN

- ✿ Dado of ceramic tiles
- ✿ Granite platform

TOILET

- ✿ Concealed pipeline using standard material
- ✿ Ceramic tiles dado
- ✿ Tiled flooring
- ✿ CP fittings of superior brands



DOORS

- ✿ Flush doors with accessories

WINDOWS

- ✿ Aluminium windows with grill

LIFT

- ✿ Elevators of a leading brand in each tower

GENERATOR

- ✿ For common area lighting and one lift in each tower
- ✿ Standby generator for light and fan points of all flats

OTHER FACILITIES

- ✿ 24 hour water supply
- ✿ Adequate car parking space for residents and visitors
- ✿ CCTV for enhanced security

Developed by



Marketing Partner 510 Earth

Stesalit Towers,
Office #7, 4th floor, Plot No E2-3, Block - EP & GP, Sector V,
Salt Lake, Kolkata - 700091

+91-9073338396

www.510earth.com

Architects

**Architect
Hafeez
Contractor**

S&S
SANON SEN & ASSOCIATES
KOLKATA

Structural Consultant


JW CONSULTANTS LLP
Formerly Y S Saini Associates

MEP Consultant


CONSULTING ENGINEERS

Landscape Consultant



Preferred Financier

 **ICICI Bank**

Disclaimer: this document is not a legal offering; it only describes the intent, purpose & concept of Ideal Greens. All the areas/ dimensions/ layout/ elevations/ pictures are only indicative and not as per scale.
All the details are subject to change, alteration and modification as per the management's discretion without any prior intimation.