





# ABOUT PURTI NEST

Efficiently laid-out residential apartments.





This brochure is not a legal document. It describes the conceptual plan to convey the intent and purpose of Purti Realty. The images are imaginary and the areas, specifications and details mentioned in the brochure are tentative and are subject to change at the sole discretion of the developer and/or architect.



# HEALTHY LIFESTYLE

These apartments were designed keeping **ventilation and natural light** in mind. Neighborhood and **location** just adds to the healthy aspect; making sure you are not in the hustle bustle of the city but at the same time you are not too far from your daily routine.







# SAFE ENVIRONMENT

**Purti Nest** is well equipped with all the basic safety features such as **CCTV Cameras, Intercom network system, power back-up and automatic elevator.**







# DETAIL SPECIFICATION

## STRUCTURE :

- Earthquake resistant RCC framed construction with infill brick walls.
- Weatherproof exterior paint.

## FLOORING :

- Main lobby : Marble / Granite
- Floor lobbies : Marble / Granite
- Staircase : Marble/Granite

## ROOF:

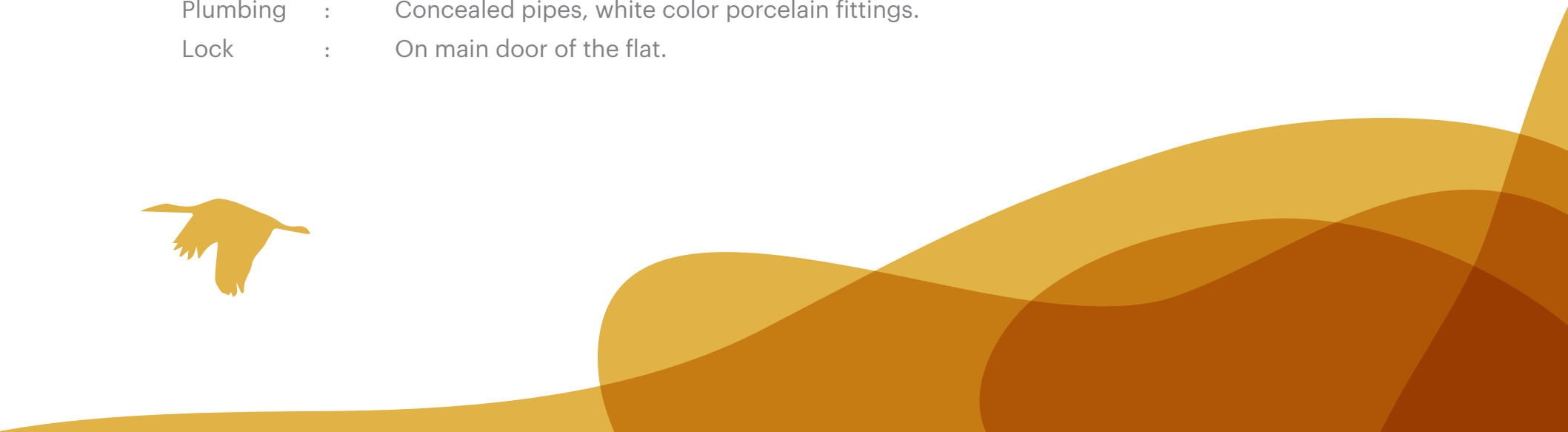
- Water Proofing with skid concrete





**UNIT :**

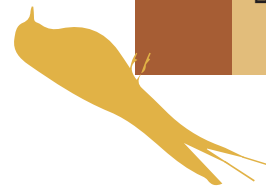
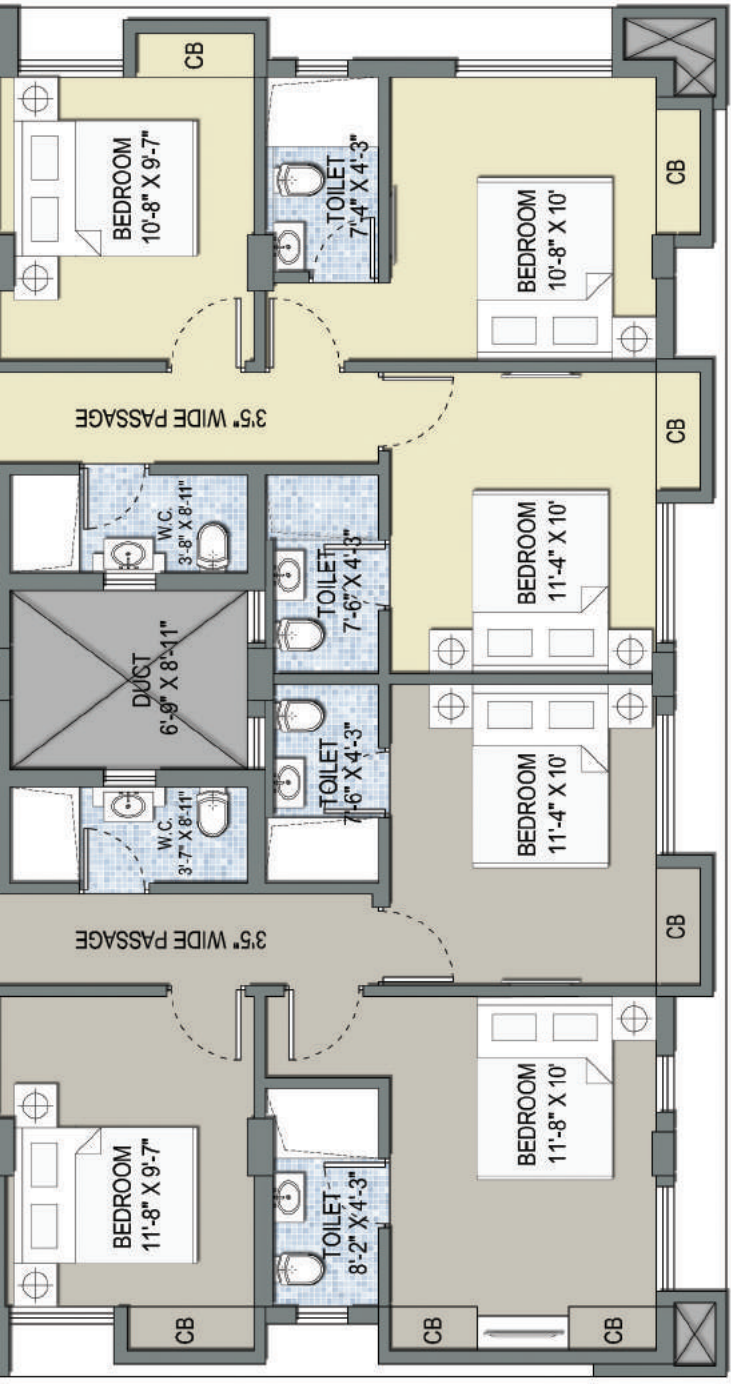
- Flooring : Vitrified tiles.
- Walls : Putty finish.
- Bedrooms : Vitrified tiles.
- Kitchen : Ceramic Tiles flooring and granite kitchen top with steel sink.
- Bathrooms : Flooring anti-skid ceramic tiles; walling of ceramic tiles up-to 7 feet height.
- Doors : Timber / RCC / stone frames and flush shutters.
- Windows : Aluminum anodized.
- Electrical : Concealed copper wiring with modular switches and Miniature Circuit Breaker.
- Plumbing : Concealed pipes, white color porcelain fittings.
- Lock : On main door of the flat.





# TYPICAL FLOOR PLAN





Type	Super Built-up Area
FLAT A (3BHK)	1304 Sq Ft.
FLAT B (3BHK)	1377 Sq Ft.
FLAT C (2.5 BHK)	1185 Sq Ft.





Seasons  
Buroshibtalla Main Road  
Perch  
Petals  
Lakeview



SN Roy Road

New Alipore  
5 point crossing

+ BP Poddar Hospital

Durgapur Bridge

New Alipore Railway Station

Petrol Pump

Station Road

Chetla Road

RSV Hospital +

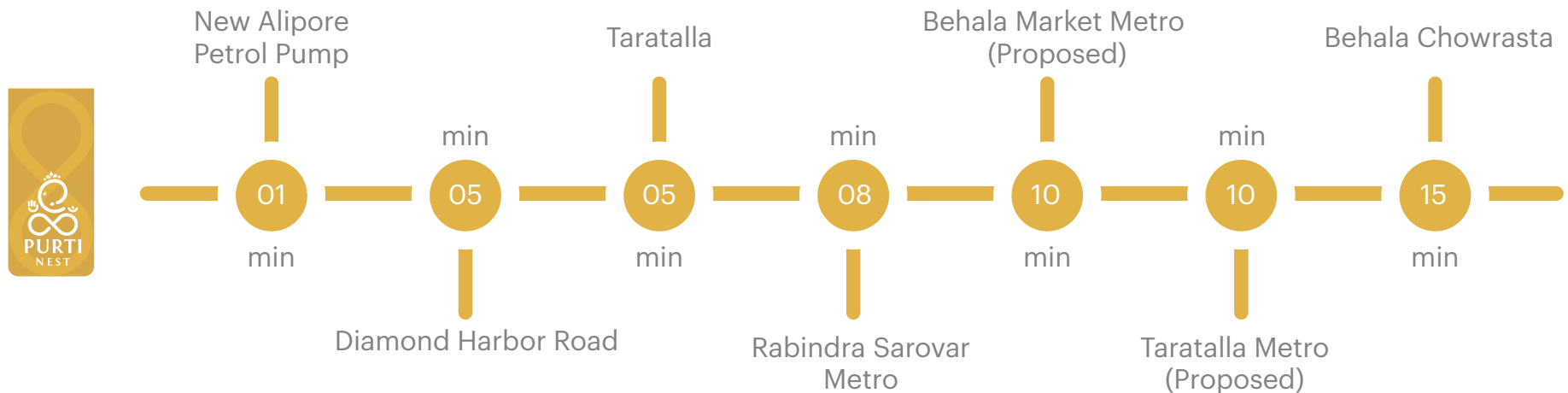
Deshapran Sashmal Road

Rabindra Sarovar Metro





# NEAREST LOCATION



## NEARBY

### Eateries:

Aqua Java, Barista, Café Coffee Day, Chai Break, Domino's, Gupta brothers, Steak House, Subway, Super Snacks Bar.

### Education institute:

Bidya Bharti for Girls, Laxmipat Singhania School, Sri Sri Academy.

### Health institution:

Gold's Gym.

### Hospital:

B.P.Poddar, Calcutta medical, RSV Hospital.

### Nearby Utilities:

ATM, Banks, Petrol Pump, Medical Shop, Super Market.





DEVELOPED BY \_\_\_\_\_



14, N. S. Road, 4th floor,  
Kolkata - 700 001  
[www.purtirealty.com](http://www.purtirealty.com)  
[Info@purtirealty.com](mailto:Info@purtirealty.com)

MARKETED BY \_\_\_\_\_



**CORPORATE OFFICE**

Stesalit Towers,  
Office #7, 4th floor  
Plot No E2-3, Block - EP & GP, Sector V,  
Salt Lake, Kolkata - 700091

**Phone:-8336992745**