



IN POWER.  
**AGAIN.**

**SIDDHA**  
**ESPLANADE**  
A Siddha-Multicon Project



# Esplanade yesterday

Around the 17th century, the Maidan and Esplanade were home to beasts. The Englishmen hunted tigers on elephant-back in this region. And beyond lay "pools, swamps and rice-fields . . ." with humble huts in the distance.

It stretched from Dharmatala to Chandpal Ghat on the Hooghly river. It was the preferred promenade for 'elegant walking parties'. It was once the throbbing nerve centre of Calcutta. The Esplanade had once ruled the industry, trade and culture of this city.

Source: Calcutta, City of Palaces - by Jeremiah P. Losty





Over time European residents moved to the area around the Maidan. In the middle of the 18th century Englishmen began to build majestic houses on the Chowringhee. These imposing structures later earned Kolkata the title of 'City of Palaces'.

Source: Calcutta, City of Palaces - by Jeremiah P. Losty





Victoria Memorial

Vidyasagar Setu

Shaheed Minar

## Esplanade today

What had been once a bustling area is in need of revival today. Merchants, visionaries and other industrious individuals are waiting for an opportunity to contribute.

Business will grow on Esplanade, again. It is this hope that drives Siddha Esplanade.

Esplanade Bus Terminus



# Mapping success

The building stands at the hub and is a stone's throw from the Esplanade Metro station, bus terminus and tram depot. It is adjacent to the Inox Metro (Previously Metro Cinema).



## Easy access

- Next to Inox Metro (previously Metro Cinema) and Esplanade Metro Station
- Opposite Esplanade Bus Terminus
- 1 minute to KMC and Oberoi Grand
- 2 minutes from New Market, Income Tax Office, Dalhousie and Park Street
- 5 minutes from Central Avenue, Chandni and Bowbazaar
- 8 minutes from Burrabazaar
- 15 minutes from Sealdah and Howrah Railway Stations
- 25 minutes from Kona Expressway



# Best of Esplanade

The legacy of Esplanade couldn't be completed without its iconic places.

- Eden Gardens
- Victoria House
- Shaheed Minar
- Tipu Sultan Masjid

The artery for trade, the Esplanade, thrives for good reason. Several important public buildings and imposing private houses still line the area.

Nearby landmarks include

- Income Tax Building
- Kolkata Municipal Corporation
- Kolkata High Court
- LIC Building

It's a place where heritage welcomes modern skylines. New icons adorn the stretch today.





# The Glorious Esplanade

Siddha Esplanade aims to revive the long-lost glory of this iconic place. It believes Esplanade will rise again with modern features and state-of-the-art infrastructure. Situated at the heart of the city, the ultra-modern commercial places beckon entrepreneurs or business professionals to embrace the opportunity.

## Project highlights

- B+G+17 Tower
- 400 - 12,500 sq ft
- Premium office spaces
- Customisable units

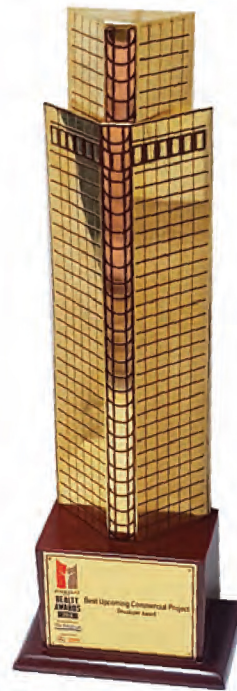




# Awards and Accolades



Top Office Spaces Project at  
TIMES REAL ESTATE REVIEW 2022



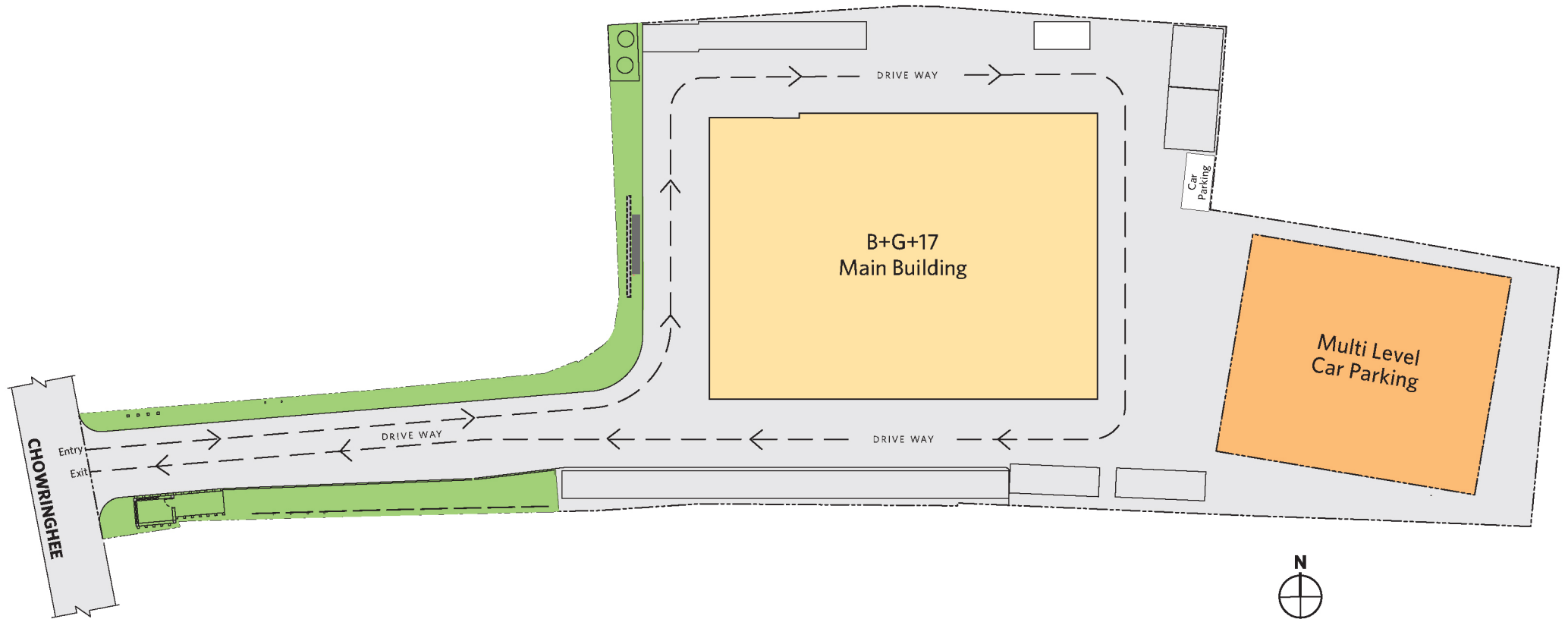
Best Upcoming Commercial Project  
CREDAI BENGAL REALTY AWARDS 2018



Special Commendation for Creating Environment  
Friendly Commercial Space  
CNBC AWAAZ REAL ESTATE AWARDS 2018-19



# Master site plan









# Advantages

- Fire fighting system
- Provision for intercom network
- Office power back up (at extra cost)
- Provision for broadband network
- Energy efficient, fresh air ventilation system in common areas
- Ample car parking
- Full power backup for common areas
- 24-hour water supply
- High speed elevators



Customisable office spaces  
at Siddha Esplanade.





# Specifications

## Proposed Specifications in common areas

### Common area and stairs

- Wall - Plastic emulsion paint over smooth impervious Plaster of Paris/Wall Putty
- Flooring - Granite/Marble/Stone/Vitrified/Ceramic

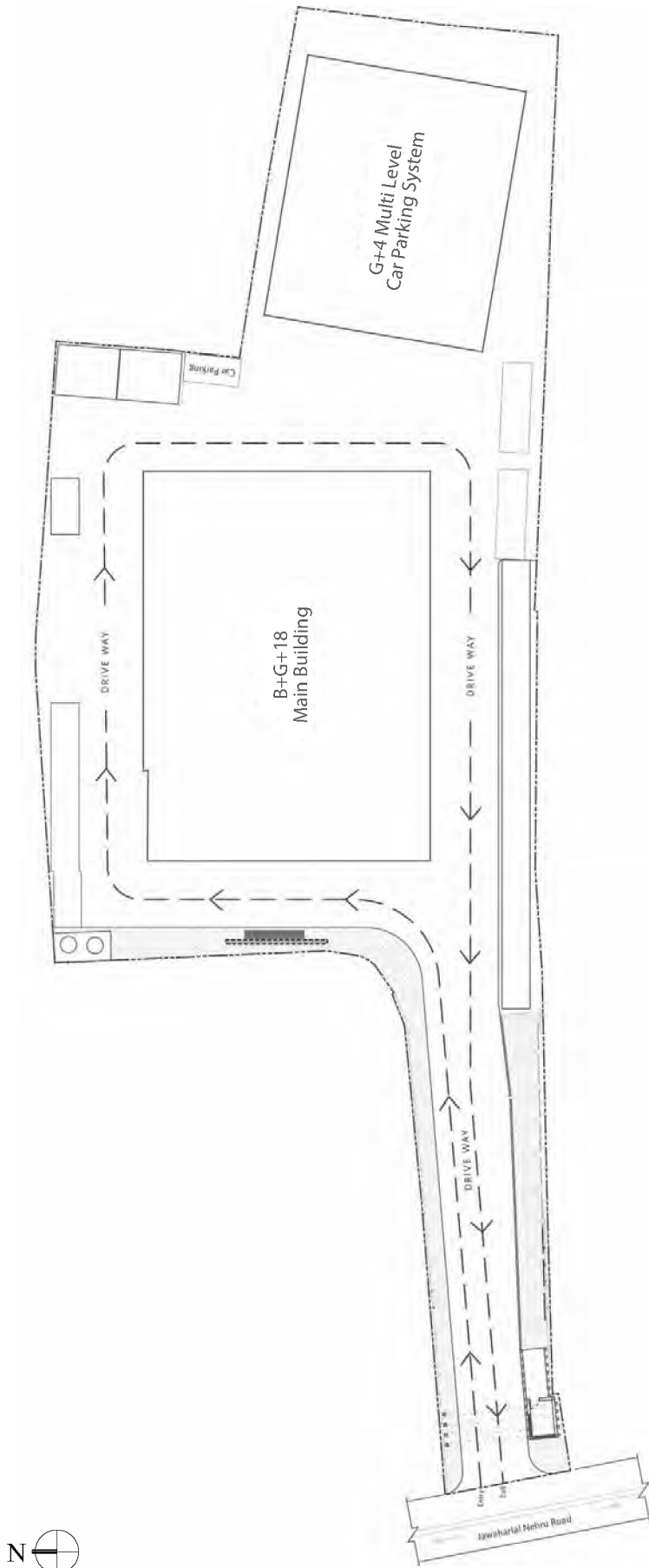
### Common toilets

- Flooring - Ceramic tiles | Dado - Up to 7 feet
- Sanitary-ware - White superior porcelain fixtures with chromium plated fittings
- External façade - External glazing as per architect's design

## Proposed Specifications inside office

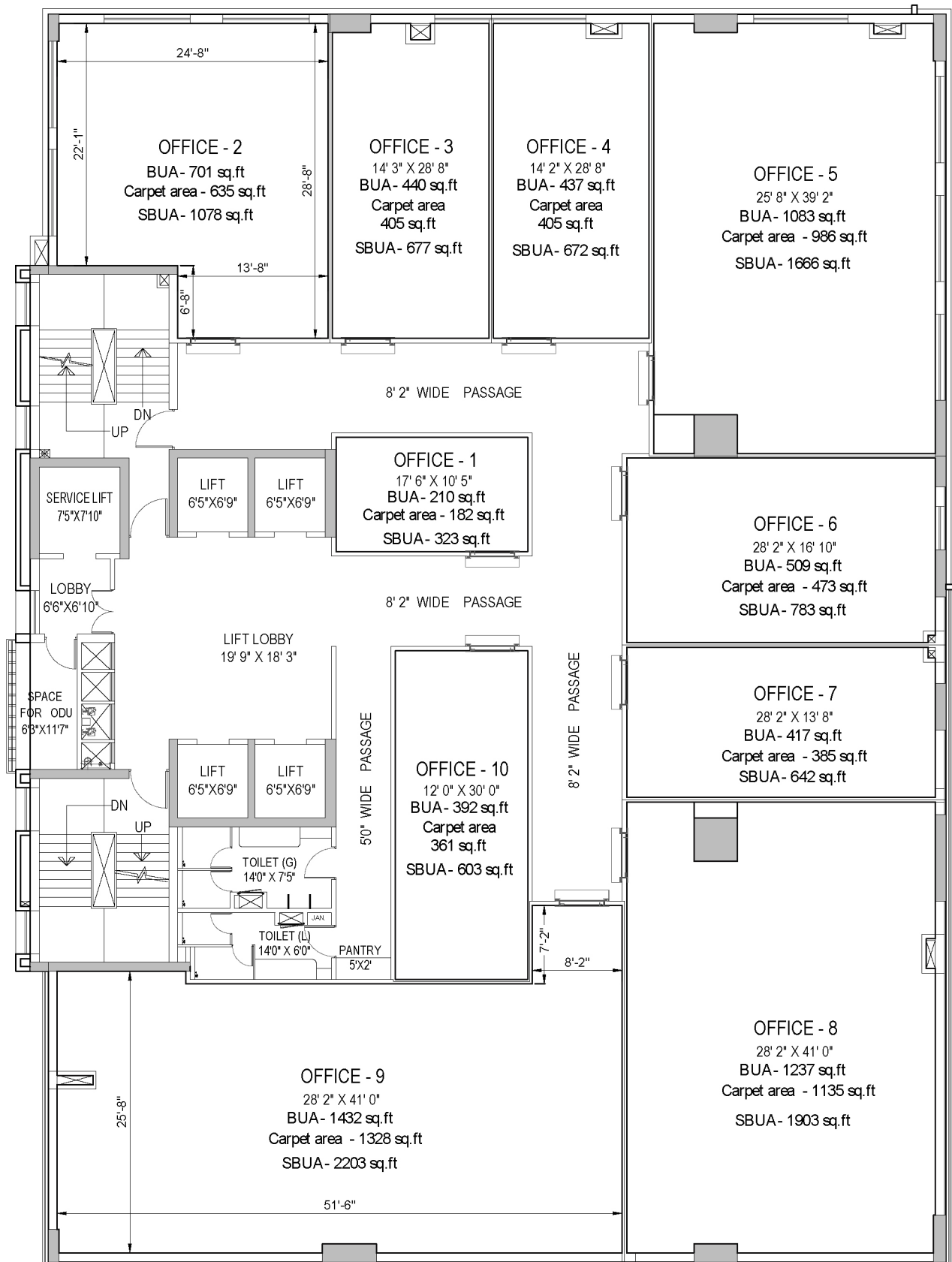
- Wall - Smooth impervious Plaster of Paris/Wall Putty
- Floor - Vitrified Tiles
- Doors - Rolling Shutter/Sliding Door
- Windows - If any, aluminium frames with fully glazed shutters and superior fittings





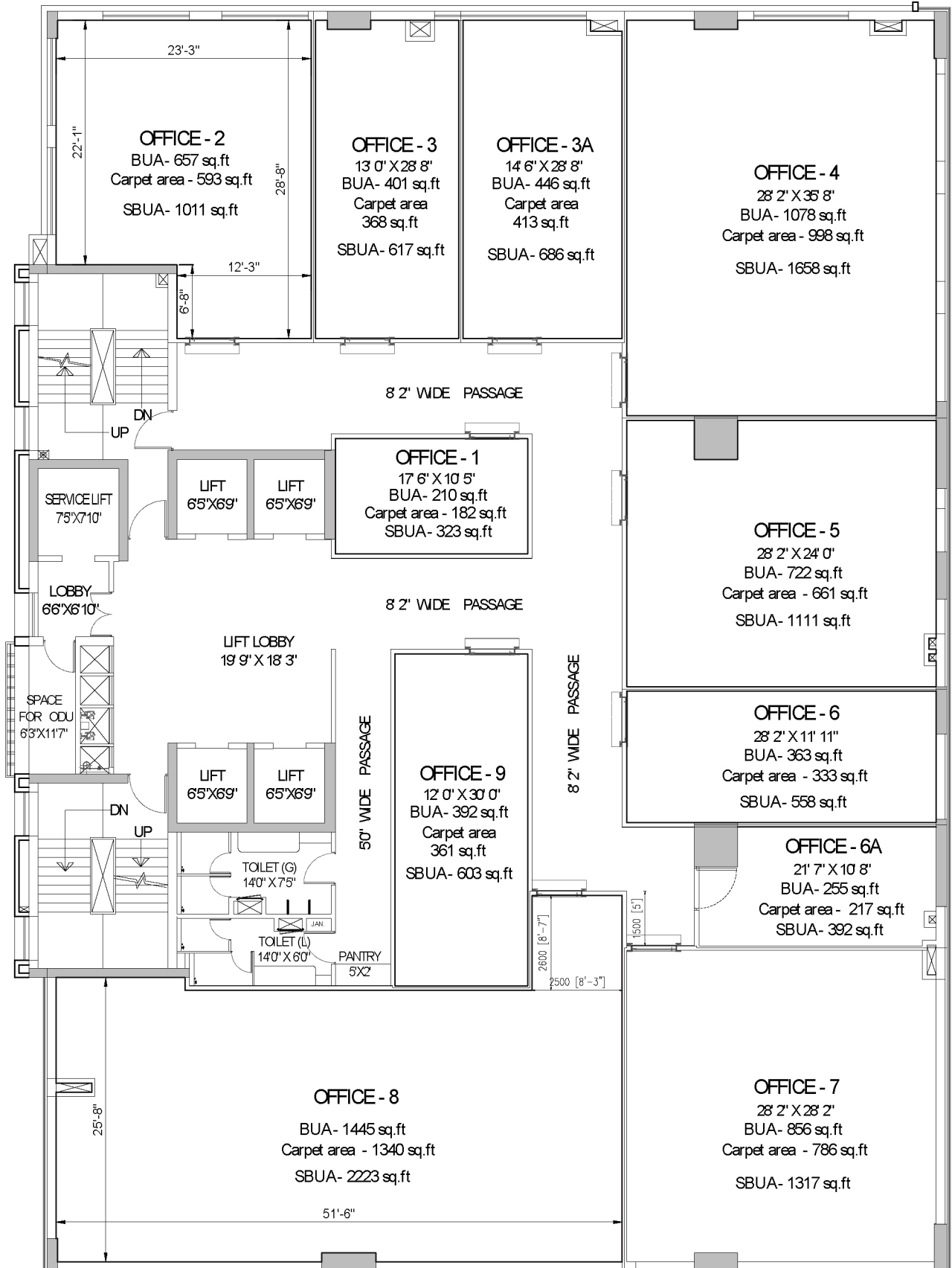
Ground Floor Plan





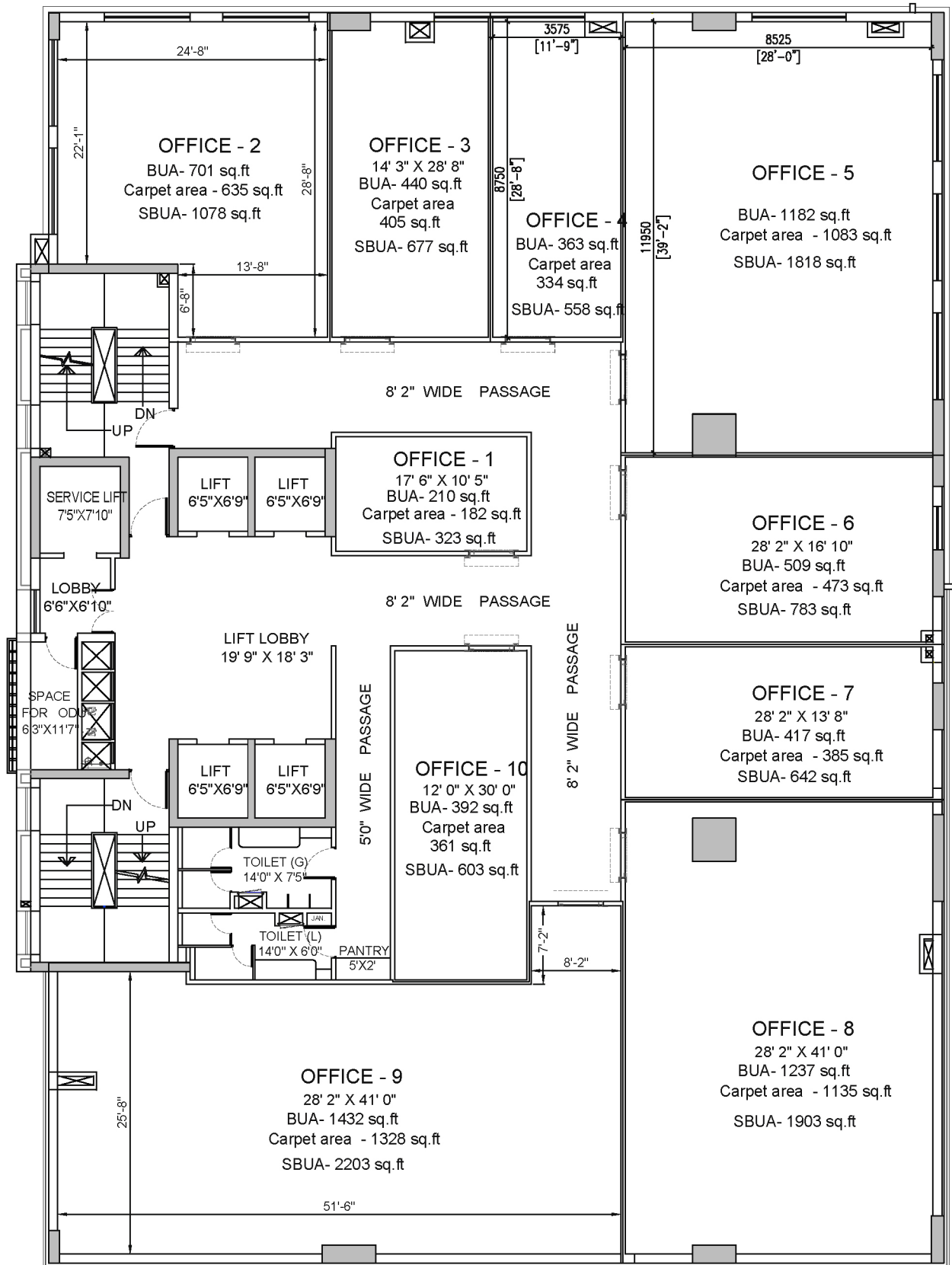
## 10TH. FLOOR PLAN





11TH. FLOOR PLAN





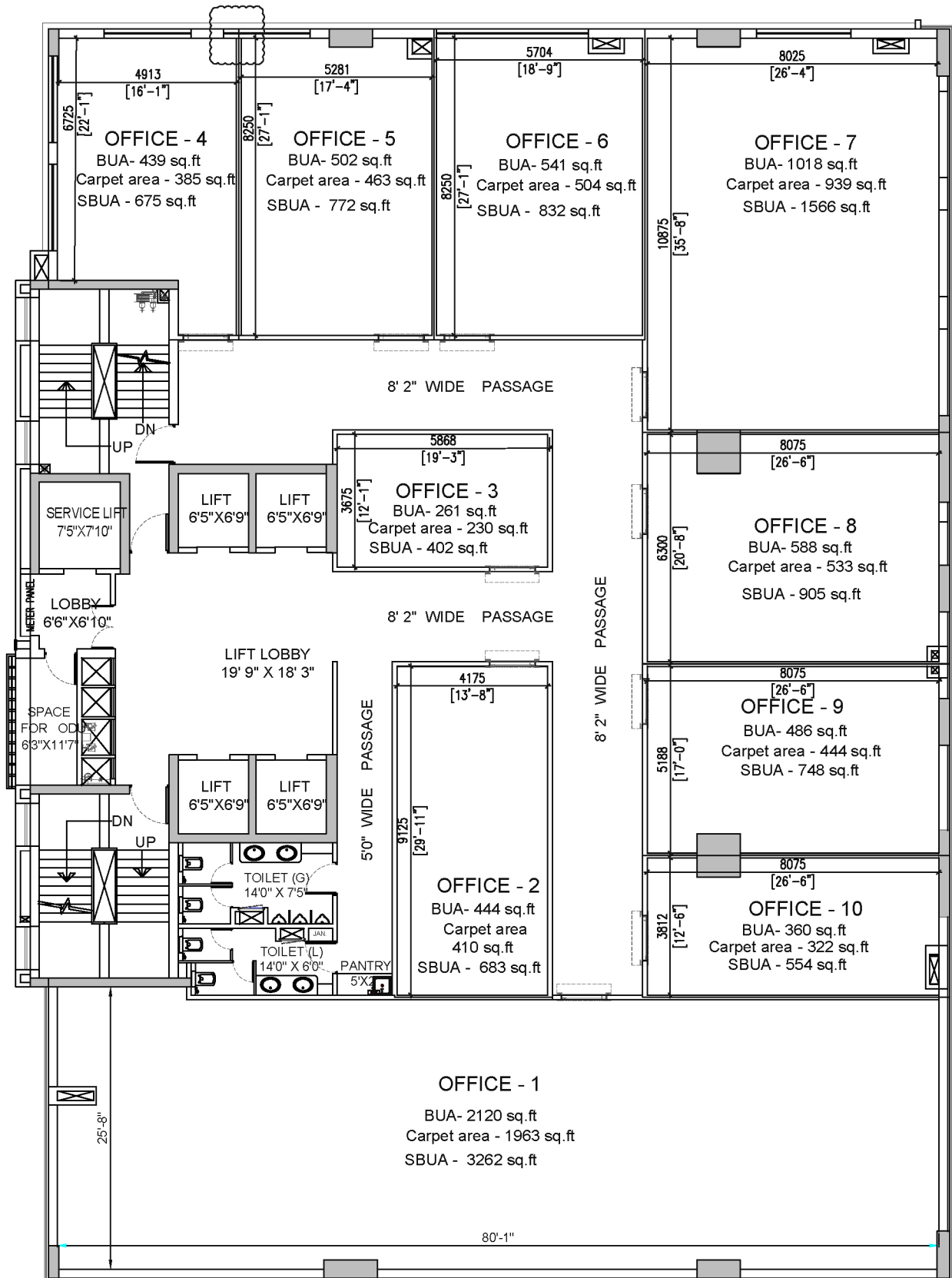
12TH. FLOOR PLAN





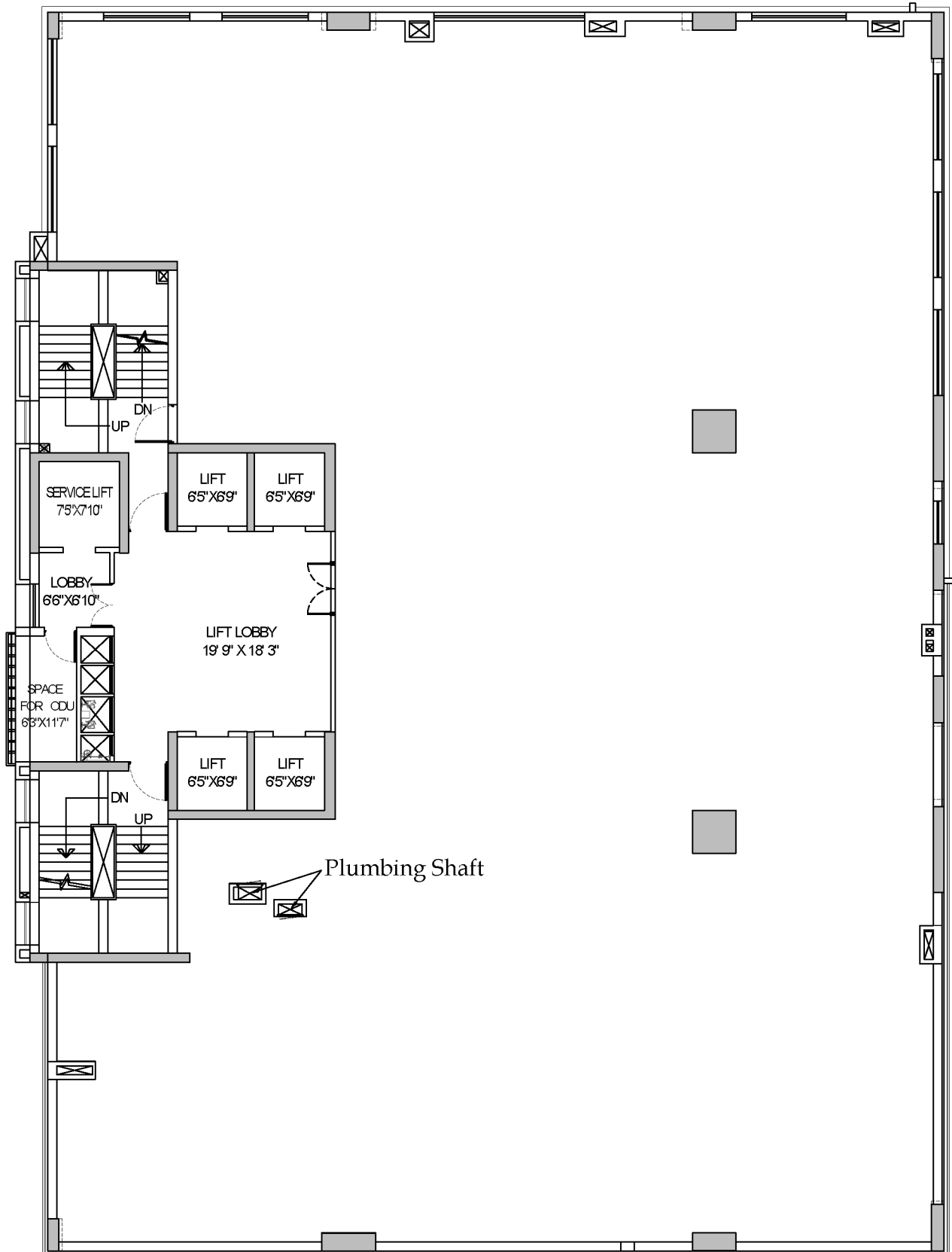
**www.510earth.com**





14TH. FLOOR PLAN





Full Floor Plan

# The team

## SIDDHA

Home is where you discover the real you. Siddha's aim is to develop high quality homes within your budget and add to your pleasant discoveries. Since its inception in 1986, Siddha has been crafting residential and commercial spaces with a difference, to make good living affordable in Kolkata, Jaipur, Mumbai and Bengaluru. Till date we have delivered 7000+ apartments and commercial spaces.

Siddha's perseverance and passion for quality homes drive it forward with every new project. Led by Group Chairman Chandra Prakash Jain and Group Managing Director Sanjay Jain, Siddha creates and sells high-quality housing in India.

Siddha believes that the magic of craftsmanship lies beyond the reality of construction. It is the ability to sculpt better lives by designing and crafting living spaces that sets Siddha apart.



The Multicon Group, Eastern India's leading developers, active in multiple real estate formats is spearheaded by the chairman Mr Dileep Singh Mehta. Having developed over 2.5 million sq ft of prime space in Kolkata, Multicon deploys three decades' experience in real estate to ensure top of the line construction and on time delivery. Multicon looks forward to develop and deliver residential and commercial spaces of high quality with processes, materials and technologies that are consistent with industry standards.

Presently Multicon has developed close to 1 million sq ft land already.



Agrawal & Agrawal, led by Jay Prakash Agrawal, the renowned architect, ranks amongst Eastern India's leading architectural practitioners. Agrawal & Agrawal is known for its residential apartments, commercial complexes, townships, IT infrastructure, complexes, malls, hotels, institutional and leisure projects.



Saha & Ray, Advocates, Kolkata, is a premier law firm specialising in real estate and property laws. Armed with international affiliations and global terms of reference, the firm is headed by Avik Saha and Jayati Ray.





**1st Floor, Block GD 50, Rajdanga Main Rd,  
New Rainbow Palace Guest House, GST Bhawan, Kasba,  
Kolkata-700107, West Bengal**

**+91-9073338396**

**[www.510earth.com](http://www.510earth.com)**